

Recombinant Human LRG1 Protein (Fc Tag)

Catalog No. PKSH030642

Note: Centrifuge before opening to ensure complete recovery of vial contents.

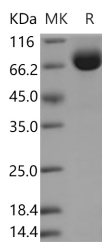
Description

Synonyms	Leucine-rich alpha-2-glycoprotein;HMFT1766;LRG;LRG1
Species	Human
Expression Host	HEK293 Cells
Sequence	Met 1-Gln347
Accession	AAH34389.1
Calculated Molecular Weight	61.3 kDa
Observed molecular weight	65-75 kDa
Tag	C-hFc
Bioactivity	Not validated for activity

Properties

Purity	> 95 % as determined by reducing SDS-PAGE.
Endotoxin	< 1.0 EU per µg of the protein as determined by the LAL method.
Storage	Generally, lyophilized proteins are stable for up to 12 months when stored at -20 to -80°C. Reconstituted protein solution can be stored at 4-8°C for 2-7 days. Aliquots of reconstituted samples are stable at < -20°C for 3 months.
Shipping	This product is provided as lyophilized powder which is shipped with ice packs.
Formulation	Lyophilized from sterile PBS, pH 7.4 Normally 5 % - 8 % trehalose, mannitol and 0.01% Tween80 are added as protectants before lyophilization. Please refer to the specific buffer information in the printed manual.
Reconstitution	Please refer to the printed manual for detailed information.

Data



> 95 % as determined by reducing SDS-PAGE.

Background

LRG1 belongs to the leucine-rich repeat (LRR) family. Members of this family are involved in protein-protein interaction, signal transduction, and cell adhesion and development. LRG1 is expressed during granulocyte differentiation.

For Research Use Only

It contains 4 LIM zinc-binding domains and 1 Rho-GAP domain.