

## Recombinant Human ADCYAP1R1 Protein (Fc Tag)

Catalog No. PKSH030694

**Note:** Centrifuge before opening to ensure complete recovery of vial contents.

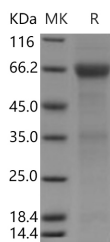
### Description

<b>Synonyms</b>	PAC1;PAC1R;PACAPR;PACAPRI
<b>Species</b>	Human
<b>Expression Host</b>	HEK293 Cells
<b>Sequence</b>	Met 1-Ala 155
<b>Accession</b>	P41586
<b>Calculated Molecular Weight</b>	42 kDa
<b>Observed molecular weight</b>	65 kDa
<b>Tag</b>	C-hFc
<b>Bioactivity</b>	Not validated for activity

### Properties

<b>Purity</b>	> 88 % as determined by reducing SDS-PAGE.
<b>Endotoxin</b>	< 1.0 EU per µg of the protein as determined by the LAL method.
<b>Storage</b>	Generally, lyophilized proteins are stable for up to 12 months when stored at -20 to -80°C. Reconstituted protein solution can be stored at 4-8°C for 2-7 days. Aliquots of reconstituted samples are stable at < -20°C for 3 months.
<b>Shipping</b>	This product is provided as lyophilized powder which is shipped with ice packs.
<b>Formulation</b>	Lyophilized from sterile PBS, pH 7.4 Normally 5 % - 8 % trehalose, mannitol and 0.01% Tween80 are added as protectants before lyophilization. Please refer to the specific buffer information in the printed manual.
<b>Reconstitution</b>	Please refer to the printed manual for detailed information.

### Data



> 88 % as determined by reducing SDS-PAGE.

### Background

SERPINB3, also known as SCCA-1, belongs to the serpin family. Serpins are a group of proteins with similar structures that were first identified as a set of proteins able to inhibit proteases. The acronym serpin was originally coined because

### For Research Use Only

many serpins inhibit chymotrypsin-like serine proteases. SERPINB3 is expressed in some hepatocellular carcinoma (at protein level). Its expression is closely related to cellular differentiation in both normal and malignant squamous cells. It seems to also be secreted in plasma by cancerous cells but at a low level. SERPINB3 significantly attenuates apoptosis by contrasting cytochrome c release from the mitochondria and by antichemotactic effect for NK cells. It may act as a protease inhibitor to modulate the host immune response against tumor cells and may be involved in the malignant behavior of squamous cell carcinoma cells.