

# Recombinant Human UBE2I/UBC9 Protein

Catalog Number:PKSH030701



**Note:** Centrifuge before opening to ensure complete recovery of vial contents.

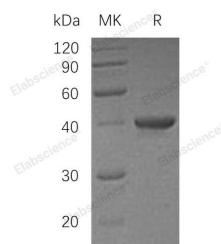
## Description

<b>Synonyms</b>	SUMO-Conjugating Enzyme UBC9;SUMO-Protein Ligase;Ubiquitin Carrier Protein 9;Ubiquitin Carrier Protein I;Ubiquitin-Conjugating Enzyme E2 I;Ubiquitin-Protein Ligase I;p18;UBE2I;UBC9;UBCE9
<b>Species</b>	Human
<b>Expression Host</b>	E.coli
<b>Sequence</b>	Met 1-Ser 158
<b>Accession</b>	P63279
<b>Calculated Molecular Weight</b>	18.0 kDa
<b>Observed molecular weight</b>	18 kDa
<b>Tag</b>	None

## Properties

<b>Purity</b>	> 90 % as determined by reducing SDS-PAGE.
<b>Endotoxin</b>	Please contact us for more information.
<b>Storage</b>	Generally, lyophilized proteins are stable for up to 12 months when stored at -20 to -80°C. Reconstituted protein solution can be stored at 4-8°C for 2-7 days. Aliquots of reconstituted samples are stable at < -20°C for 3 months.
<b>Shipping</b>	This product is provided as lyophilized powder which is shipped with ice packs.
<b>Formulation</b>	Lyophilized from sterile PBS, 10% glycerol, 2mM DTT, pH 7.4 Normally 5 % - 8 % trehalose, mannitol and 0.01% Tween80 are added as protectants before lyophilization. Please refer to the specific buffer information in the printed manual.
<b>Reconstitution</b>	Please refer to the printed manual for detailed information.

## Data



> 90 % as determined by reducing SDS-PAGE.

## Background

UBE2I is a member of the ubiquitin-conjugating E2 family whose members perform the second step in the ubiquitination reaction. Initially identified as the main process for protein degradation; ubiquitination is believed nowadays to be crucial for a wider range of cellular processes. The outcome of the ubiquitin-conjugation reaction; and thereby the fate of the substrate; is heavily dependent on the number of ubiquitin molecules attached and how these ubiquitin molecules are interconnected. To deal with this complexity and to allow adequate ubiquitination in time and space; a highly sophisticated conjugation machinery has been developed. In a sequential manner; ubiquitin becomes activated by an ubiquitin-

## For Research Use Only

A Reliable Research Partner in Life Science and Medicine

Toll-free: 1-888-852-8623

Web: [www.elabscience.com](http://www.elabscience.com)

Tel: 1-832-243-6086

Email: [techsupport@elabscience.com](mailto:techsupport@elabscience.com)

Fax: 1-832-243-6017

# Recombinant Human UBE2I/UBC9 Protein

Catalog Number:PKSH030701



activating enzyme (E1); which then transfers the ubiquitin to a group of ubiquitin-conjugating enzymes (E2s). Next; ubiquitin-loaded E2s are interacting with ubiquitin protein ligases (E3s) and ubiquitin is conjugated to substrates on recruitment by the E3. These three key enzymes are operating in a hierarchical system; wherein two E1s and 35 E2s have been found and hundreds of E3s have been identified in humans.

---

## For Research Use Only

A Reliable Research Partner in Life Science and Medicine

Toll-free: 1-888-852-8623

Web: [www.elabscience.com](http://www.elabscience.com)

Tel: 1-832-243-6086

Email: [techsupport@elabscience.com](mailto:techsupport@elabscience.com)

Fax: 1-832-243-6017