

Recombinant Human Mesothelin/MSLN Protein (Fc Tag)



Catalog Number:PKSH030719

Note: Centrifuge before opening to ensure complete recovery of vial contents.

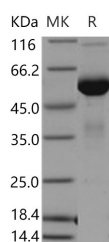
Description

Synonyms	Megakaryocyte potentiating factor;mesothelin;Pre-pro-megakaryocyte-potentiating factor;soluble MPF mesothelin related protein;CAK1;MPF;MSLN;SMR;CAK1;CAK1 antigen
Species	Human
Expression Host	HEK293 Cells
Sequence	Met 1-Arg286
Accession	Q13421-2
Calculated Molecular Weight	53.7 kDa
Observed molecular weight	56 kDa
Tag	C-hFc

Properties

Purity	> 99 % as determined by reducing SDS-PAGE.
Endotoxin	< 1.0 EU per µg of the protein as determined by the LAL method.
Storage	Generally, lyophilized proteins are stable for up to 12 months when stored at -20 to -80°C. Reconstituted protein solution can be stored at 4-8°C for 2-7 days. Aliquots of reconstituted samples are stable at < -20°C for 3 months.
Shipping	This product is provided as lyophilized powder which is shipped with ice packs.
Formulation	Lyophilized from sterile PBS, pH 7.4 Normally 5 % - 8 % trehalose, mannitol and 0.01% Tween80 are added as protectants before lyophilization. Please refer to the specific buffer information in the printed manual.
Reconstitution	Please refer to the printed manual for detailed information.

Data



> 99 % as determined by reducing SDS-PAGE.

Background

Megakaryocyte potentiating factor belongs to the mesothelin family. This family is comprised by several mammalian pre-pro-megakaryocyte potentiating factor precursor (MPF) or mesothelin proteins. Mesothelin is a glycosylphosphatidylinositol-linked glycoprotein highly expressed in mesothelial cells; mesotheliomas; and ovarian cancer; but the biological function of the protein is not known. Megakaryocyte potentiating factor is highly expressed in mesotheliomas; ovarian cancers; and some squamous cell carcinomas (at protein level). It interacts with MUC16 and potentiates megakaryocyte colony formation in vitro. Megakaryocyte potentiating factor is secreted by several

For Research Use Only

A Reliable Research Partner in Life Science and Medicine

Toll-free: 1-888-852-8623

Web: www.elabscience.com

Tel: 1-832-243-6086

Email: techsupport@elabscience.com

Fax: 1-832-243-6017

Recombinant Human Mesothelin/MSLN Protein (Fc Tag)

Catalog Number:PKSH030719



mesothelioma cell lines and is frequently elevated in the blood of patients with mesothelioma. Measurement of this protein may be useful in following the response of mesothelioma to treatment.

For Research Use Only

A Reliable Research Partner in Life Science and Medicine

Toll-free: 1-888-852-8623

Web: www.elabscience.com

Tel: 1-832-243-6086

Email: techsupport@elabscience.com

Fax: 1-832-243-6017