

Recombinant Human Mesothelin/MSLN Protein (aa 296-580, Fc Tag)



Catalog Number:PKSH030720

Note: Centrifuge before opening to ensure complete recovery of vial contents.

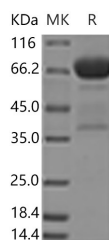
Description

| | |
|------------------------------------|---|
| Synonyms | Megakaryocyte potentiating factor;mesothelin;Pre-pro-megakaryocyte-potentiating factor;soluble MPF mesothelin related protein;CAK1;MPF;MSLN;SMR;CAK1;CAK1 antigen |
| Species | Human |
| Expression Host | HEK293 Cells |
| Sequence | Glu296-Gly580 |
| Accession | Q13421-2 |
| Calculated Molecular Weight | 60.7 kDa |
| Observed molecular weight | 65 kDa |
| Tag | N-hFc |

Properties

| | |
|-----------------------|---|
| Purity | > 95 % as determined by reducing SDS-PAGE. |
| Endotoxin | < 1.0 EU per µg of the protein as determined by the LAL method. |
| Storage | Generally, lyophilized proteins are stable for up to 12 months when stored at -20 to -80°C. Reconstituted protein solution can be stored at 4-8°C for 2-7 days. Aliquots of reconstituted samples are stable at < -20°C for 3 months. |
| Shipping | This product is provided as lyophilized powder which is shipped with ice packs. |
| Formulation | Lyophilized from sterile PBS, pH 7.4 Normally 5 % - 8 % trehalose, mannitol and 0.01% Tween80 are added as protectants before lyophilization. Please refer to the specific buffer information in the printed manual. |
| Reconstitution | Please refer to the printed manual for detailed information. |

Data



> 95 % as determined by reducing SDS-PAGE.

Background

Megakaryocyte potentiating factor belongs to the mesothelin family. This family is comprised by several mammalian pre-pro-megakaryocyte potentiating factor precursor (MPF) or mesothelin proteins. Mesothelin is a glycosylphosphatidylinositol-linked glycoprotein highly expressed in mesothelial cells; mesotheliomas; and ovarian cancer; but the biological function of the protein is not known. Megakaryocyte potentiating factor is highly expressed in mesotheliomas; ovarian cancers; and some squamous cell carcinomas (at protein level). It interacts with MUC16 and potentiates megakaryocyte colony formation in vitro. Megakaryocyte potentiating factor is secreted by several

For Research Use Only

A Reliable Research Partner in Life Science and Medicine

Toll-free: 1-888-852-8623

Web: www.elabscience.com

Tel: 1-832-243-6086

Email: techsupport@elabscience.com

Fax: 1-832-243-6017

Recombinant Human Mesothelin/MSLN Protein (aa 296-580, Fc Tag)



Catalog Number:PKSH030720

mesothelioma cell lines and is frequently elevated in the blood of patients with mesothelioma. Measurement of this protein may be useful in following the response of mesothelioma to treatment.

For Research Use Only

A Reliable Research Partner in Life Science and Medicine

Toll-free: 1-888-852-8623

Tel: 1-832-243-6086

Fax: 1-832-243-6017

Web: www.elabscience.com

Email: techsupport@elabscience.com