

# Recombinant Human TXNRD1/TRXR1 Protein (aa 161-647, His Tag)

Catalog Number:PKSH030732



**Note:** Centrifuge before opening to ensure complete recovery of vial contents.

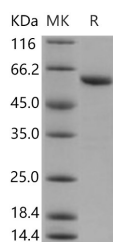
## Description

<b>Synonyms</b>	GRIM-12;TR;TR1;TRXR1;TXNR
<b>Species</b>	Human
<b>Expression Host</b>	E.coli
<b>Sequence</b>	Tyr 161-Cys 647
<b>Accession</b>	Q16881-1
<b>Calculated Molecular Weight</b>	55.0 kDa
<b>Observed molecular weight</b>	60 kDa
<b>Tag</b>	N-His

## Properties

<b>Purity</b>	> 90 % as determined by reducing SDS-PAGE.
<b>Endotoxin</b>	Please contact us for more information.
<b>Storage</b>	Generally, lyophilized proteins are stable for up to 12 months when stored at -20 to -80°C. Reconstituted protein solution can be stored at 4-8°C for 2-7 days. Aliquots of reconstituted samples are stable at < -20°C for 3 months.
<b>Shipping</b>	This product is provided as lyophilized powder which is shipped with ice packs.
<b>Formulation</b>	Lyophilized from sterile PBS, pH 7.4 Normally 5 % - 8 % trehalose, mannitol and 0.01 % Tween80 are added as protectants before lyophilization. Please refer to the specific buffer information in the printed manual.
<b>Reconstitution</b>	Please refer to the printed manual for detailed information.

## Data



> 90 % as determined by reducing SDS-PAGE.

## Background

Thioredoxin reductase 1 (TXNRD1) which is a selenocysteine-containing protein is overexpressed in many malignancies. TXNRD1 plays a key role in regulating cell growth and transformation, and protects cells against oxidative damage. We investigated the association between TXNRD1 polymorphisms and ATDH susceptibility. Moreover, TXNRD1 is an essential selenium-containing enzyme involved in detoxification of reactive oxygen species (ROS) and redox signaling. And genetic variations in TXNRD1 favor the development of Drug-induced liver injury (DILI), which is the most common adverse drug reaction.

## For Research Use Only

A Reliable Research Partner in Life Science and Medicine

Toll-free: 1-888-852-8623

Web: [www.elabscience.com](http://www.elabscience.com)

Tel: 1-832-243-6086

Email: [techsupport@elabscience.com](mailto:techsupport@elabscience.com)

Fax: 1-832-243-6017