

Recombinant Human GOLPH2/GOLM1 Protein (aa 40-401, His Tag)



Catalog Number:PKSH030746

Note: Centrifuge before opening to ensure complete recovery of vial contents.

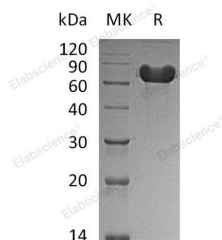
Description

Synonyms	Golgi Membrane Protein 1;Golgi Membrane Protein GP73;Golgi Phosphoprotein 2;GOLM1;C9orf155;GOLPH2
Species	Human
Expression Host	HEK293 Cells
Sequence	Val 40-Leu 401
Accession	Q8NBJ4-1
Calculated Molecular Weight	42.7 kDa
Tag	C-His

Properties

Purity	> 90 % as determined by reducing SDS-PAGE.
Endotoxin	< 1.0 EU per µg of the protein as determined by the LAL method.
Storage	Generally, lyophilized proteins are stable for up to 12 months when stored at -20 to -80°C. Reconstituted protein solution can be stored at 4-8°C for 2-7 days. Aliquots of reconstituted samples are stable at < -20°C for 3 months.
Shipping	This product is provided as lyophilized powder which is shipped with ice packs.
Formulation	Lyophilized from sterile PBS, pH 7.4 Normally 5 % - 8 % trehalose, mannitol and 0.01% Tween80 are added as protectants before lyophilization. Please refer to the specific buffer information in the printed manual.
Reconstitution	Please refer to the printed manual for detailed information.

Data



> 90 % as determined by reducing SDS-PAGE.

Background

Golgi membrane protein 1; also known as Golgi membrane protein GP73; Golgi phosphoprotein 2 and GOLM1; is a protein which belongs to theGOLM1 / CASC4 family. GOLM1 is widely expressed. It is highly expressed in colon; prostate; trachea and stomach. It is expressed at lower level in testis; muscle; lymphoid tissues; white blood cells and spleen. It is predominantly expressed by cells of the epithelial lineage. GOLM1 is expressed at low level in normal liver. Expression significantly increases in virus (HBV; HCV) infected liver. Expression of GOLM1 does not increase in liver disease due to non-viral causes (alcohol-induced liver disease; autoimmune hepatitis). Increased expression in hepatocytes appears to be a general feature of advanced liver disease. In liver tissue from patients with adult giant-cell hepatitis (GCH); GOLM1 is strongly expressed in hepatocyte-derived syncytial giant cells. GOLM1 is constitutively expressed by biliary epithelial cells but not by hepatocytes.

For Research Use Only

A Reliable Research Partner in Life Science and Medicine

Toll-free: 1-888-852-8623

Web: www.elabscience.com

Tel: 1-832-243-6086

Email: techsupport@elabscience.com

Fax: 1-832-243-6017

Recombinant Human GOLPH2/GOLM1 Protein (aa 40-401, His Tag)

Catalog Number:PKSH030746



For Research Use Only

A Reliable Research Partner in Life Science and Medicine

Toll-free: 1-888-852-8623

Tel: 1-832-243-6086

Fax: 1-832-243-6017

Web: www.elabscience.com

Email: techsupport@elabscience.com