

Recombinant Human KIR2DL4/CD158D Protein

Catalog Number:PKSH030752



Note: Centrifuge before opening to ensure complete recovery of vial contents.

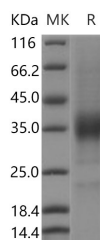
Description

Synonyms	Killer Cell Immunoglobulin-Like Receptor 2DL4;CD158 Antigen-Like Family Member D;G9P;Killer Cell Inhibitory Receptor 103AS;KIR-103AS;MHC Class I NK Cell Receptor KIR103AS;CD158d;KIR2DL4;CD158D;KIR103AS
Species	Human
Expression Host	CHO Stable Cells
Sequence	Met 1-His242
Accession	ADY38409.1
Calculated Molecular Weight	25.1 kDa
Observed molecular weight	33-37 kDa
Tag	None

Properties

Purity	> 85 % as determined by reducing SDS-PAGE.
Endotoxin	< 1.0 EU per µg of the protein as determined by the LAL method.
Storage	Generally, lyophilized proteins are stable for up to 12 months when stored at -20 to -80°C. Reconstituted protein solution can be stored at 4-8°C for 2-7 days. Aliquots of reconstituted samples are stable at < -20°C for 3 months.
Shipping	This product is provided as lyophilized powder which is shipped with ice packs.
Formulation	Lyophilized from sterile PBS, pH 7.4 Normally 5 % - 8 % trehalose, mannitol and 0.01 % Tween80 are added as protectants before lyophilization. Please refer to the specific buffer information in the printed manual.
Reconstitution	Please refer to the printed manual for detailed information.

Data



> 85 % as determined by reducing SDS-PAGE.

Background

KIR2DL4, also known as CD158d, is a member of the killer cell Ig-like receptor (KIR) family. KIRs are transmembrane glycoproteins expressed by natural killer cells and subsets of T cells. The KIR genes are polymorphic and highly homologous. KIR2DL4 is expressed in all NK cells and some T cells. KIR2DL4 activates the cytotoxicity of NK cells, despite the presence of an immunoreceptor tyrosine-based inhibition motif (ITIM) in its cytoplasmic tail. The ITIM was not necessary for activation of lysis by KIR2DL4. The activation signal of KIR2DL4 was sensitive to inhibition by another ITIM-containing receptor. The activation-deficient mutant of KIR2DL4 inhibited the signal delivered by the

For Research Use Only

A Reliable Research Partner in Life Science and Medicine

Toll-free: 1-888-852-8623

Web: www.elabscience.com

Tel: 1-832-243-6086

Email: techsupport@elabscience.com

Fax: 1-832-243-6017

Recombinant Human KIR2DL4/CD158D Protein

Catalog Number:PKSH030752



activating receptor CD16.

For Research Use Only

A Reliable Research Partner in Life Science and Medicine

Toll-free: 1-888-852-8623

Web: www.elabscience.com

Tel: 1-832-243-6086

Email: techsupport@elabscience.com

Fax: 1-832-243-6017