

Recombinant Human PDE2A/CGS-PDE Protein (aa 215-900, His Tag)



Catalog Number:PKSH030756

Note: Centrifuge before opening to ensure complete recovery of vial contents.

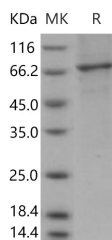
Description

Synonyms	CGS-PDE;cGSPDE;PDE2A1;PED2A4
Species	Human
Expression Host	Baculovirus-Insect Cells
Sequence	Glu 215-His 900
Accession	O00408-1
Calculated Molecular Weight	80.0 kDa
Observed molecular weight	66 kDa
Tag	C-His

Properties

Purity	> 90 % as determined by reducing SDS-PAGE.
Endotoxin	< 1.0 EU per µg of the protein as determined by the LAL method.
Storage	Generally, lyophilized proteins are stable for up to 12 months when stored at -20 to -80°C. Reconstituted protein solution can be stored at 4-8°C for 2-7 days. Aliquots of reconstituted samples are stable at < -20°C for 3 months.
Shipping	This product is provided as lyophilized powder which is shipped with ice packs.
Formulation	Lyophilized from sterile 20mM Tris, 500mM NaCl, pH 7.4, 10% glycerol Normally 5 % - 8 % trehalose, mannitol and 0.01% Tween80 are added as protectants before lyophilization. Please refer to the specific buffer information in the printed manual.
Reconstitution	Please refer to the printed manual for detailed information.

Data



> 90 % as determined by reducing SDS-PAGE.

Background

cGMP-dependent 3',5'-cyclic phosphodiesterase, also known as cyclic GMP-stimulated phosphodiesterase and PDE2A, is a peripheral membrane protein which belongs to the cyclic nucleotide phosphodiesterase family and PDE2 subfamily. Phosphodiesterases (PDEs) comprise a family of enzymes that regulate the levels of cyclic nucleotides, key second messengers that mediate a diverse array of functions. Phosphodiesterases (PDEs) modulate signaling by cyclic nucleotides in diverse processes such as cardiac contractility, platelet aggregation, lipolysis, glycogenolysis, and smooth muscle contraction. PDE2A is an evolutionarily conserved cGMP-stimulated cAMP and cGMP PDE. PDE2A contains two GAF domains. PDE2A is expressed in brain and to a lesser extent in heart, placenta, lung, skeletal muscle, kidney and pancreas. PDE2A is a cyclic nucleotide phosphodiesterase with a dual-specificity for the second messengers cAMP and cGMP,

For Research Use Only

A Reliable Research Partner in Life Science and Medicine

Toll-free: 1-888-852-8623

Web: www.elabscience.com

Tel: 1-832-243-6086

Email: techsupport@elabscience.com

Fax: 1-832-243-6017

Recombinant Human PDE2A/CGS-PDE Protein (aa 215-900, His Tag)



Catalog Number:PKSH030756

which are key regulators of many important physiological processes. PDE2A is involved in the regulation of blood pressure and fluid homeostasis by the atrial natriuretic peptide (ANP), making PDE2-type enzymes important targets for drug discovery.

For Research Use Only

A Reliable Research Partner in Life Science and Medicine

Toll-free: 1-888-852-8623

Tel: 1-832-243-6086

Fax: 1-832-243-6017

Web: www.elabscience.com

Email: techsupport@elabscience.com