

Recombinant Human IGJ/Immunoglobulin J Chain Protein (His Tag)



Catalog Number:PKSH030760

Note: Centrifuge before opening to ensure complete recovery of vial contents.

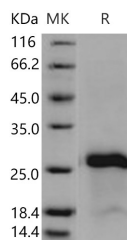
Description

Synonyms	IGCJ;JCH
Species	Human
Expression Host	E.coli
Sequence	Gln 23-Asp 159
Accession	NP_653247.1
Calculated Molecular Weight	17 kDa
Observed molecular weight	26 kDa
Tag	C-His

Properties

Purity	> 90 % as determined by reducing SDS-PAGE.
Endotoxin	Please contact us for more information.
Storage	Generally, lyophilized proteins are stable for up to 12 months when stored at -20 to -80°C. Reconstituted protein solution can be stored at 4-8°C for 2-7 days. Aliquots of reconstituted samples are stable at < -20°C for 3 months.
Shipping	This product is provided as lyophilized powder which is shipped with ice packs.
Formulation	Lyophilized from sterile PBS, pH 8.0 Normally 5 % - 8 % trehalose, mannitol and 0.01 % Tween80 are added as protectants before lyophilization. Please refer to the specific buffer information in the printed manual.
Reconstitution	Please refer to the printed manual for detailed information.

Data



> 90 % as determined by reducing SDS-PAGE.

Background

Immunoglobulin J chain, also known as IGJ and IGCJ, is a secreted polypeptide which is the first immunoglobulin-related polypeptide expressed during the embryogenesis and differentiation of B cells in the fetal liver. The joining Immunoglobulin J chain is a small polypeptide, expressed by mucosal and glandular plasma cells, which regulates polymer formation of immunoglobulin (Ig)A and IgM. Immunoglobulin J chain / IGJ serves to link two monomer units of either IgM or IgA. In the case of IgM, the J chain-joined dimer is a nucleating unit for the IgM pentamer, and in the case of IgA it induces larger polymers. Immunoglobulin J chain / IGJ also help to bind these immunoglobulins to secretory component. J-chain incorporation into polymeric IgA (pIgA, mainly dimers) and pentameric IgM endows these antibodies with several salient features. Immunoglobulin J chain / IGJ is involved in creating the binding site for pIgR / SC in the Ig

For Research Use Only

A Reliable Research Partner in Life Science and Medicine

Toll-free: 1-888-852-8623

Web: www.elabscience.com

Tel: 1-832-243-6086

Email: techsupport@elabscience.com

Fax: 1-832-243-6017

Recombinant Human IGJ/Immunoglobulin J Chain Protein ^{dg} (His Tag)



Catalog Number:PKSH030760

polymers, not only by determining the polymeric quaternary structure but apparently also by interacting directly with the receptor protein. Both the immunoglobulin J chain / IGJ and the pIgR/SC are key proteins in secretory immunity.

For Research Use Only

A Reliable Research Partner in Life Science and Medicine

Toll-free: 1-888-852-8623

Web: www.elabscience.com

Tel: 1-832-243-6086

Email: techsupport@elabscience.com

Fax: 1-832-243-6017