

Recombinant Human ISG15/G1P2 Protein

Catalog No. PKSH030786

Note: Centrifuge before opening to ensure complete recovery of vial contents.

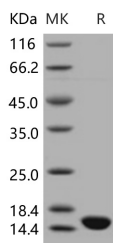
Description

Synonyms	Ubiquitin-Like Protein ISG15;Interferon-Induced 15 kDa Protein;Interferon-Induced 17 kDa Protein;IP17;Ubiquitin Cross-Reactive Protein;hUCRP;ISG15;G1P2;UCRP
Species	Human
Expression Host	E.coli
Sequence	Met 1-Ser 165
Accession	AAH09507.1
Calculated Molecular Weight	17.9 kDa
Observed molecular weight	16 kDa
Tag	None
Bioactivity	Not validated for activity

Properties

Purity	> 97 % as determined by reducing SDS-PAGE.
Endotoxin	Please contact us for more information.
Storage	Generally, lyophilized proteins are stable for up to 12 months when stored at -20 to -80°C. Reconstituted protein solution can be stored at 4-8°C for 2-7 days. Aliquots of reconstituted samples are stable at < -20°C for 3 months.
Shipping	This product is provided as lyophilized powder which is shipped with ice packs.
Formulation	Lyophilized from sterile 50mM Tris, pH 8.0 Normally 5 % - 8 % trehalose, mannitol and 0.01% Tween80 are added as protectants before lyophilization. Please refer to the specific buffer information in the printed manual.
Reconstitution	Please refer to the printed manual for detailed information.

Data



> 97 % as determined by reducing SDS-PAGE.

Background

For Research Use Only

Interferon-induced 17 kDa protein (ISG15), a 15-kDa protein of unique primary amino acid sequence, functions intracellularly as a ubiquitin homologue and a cytokine that induces production of IFN-gamma and augments NK / lymphokine-activated killer cell proliferation and function. ISG15 is secreted from monocytes and lymphocytes. ISG15 is an ubiquitin-like molecule that is strongly upregulated by type I interferons as a primary response to diverse microbial and cellular stress stimuli. Alterations in the ISG15 signalling pathway have also been found in several human tumour entities. In addition to being stimulated by type I interferon, expression of ISG15 is greatly induced by viral or bacterial infection through the Janus kinase / signal transducer and activator of transcription (Jak / STAT) signalling pathway. After induction, ISG15 is secreted by monocytes, B- and T-lymphocytes and fibroblasts. We demonstrate the novel way in which the function of the ISG15 protein is inhibited by influenza B virus, which strongly induces the ISG15 protein: a specific region of the influenza B virus NS1 protein, which includes part of its effector domain, blocks the covalent linkage of ISG15 to its target proteins both in vitro and in infected cells.