

# Recombinant Human LAMTOR2/ROBLD3/MAPBPIP Protein (His Tag)



Catalog Number:PKSH030802

**Note:** Centrifuge before opening to ensure complete recovery of vial contents.

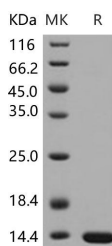
## Description

<b>Synonyms</b>	ENDAP;HSPC003;MAPBPIP;MAPKSP1AP;p14;Ragulator2;ROBLD3;RP11-336 K24.9
<b>Species</b>	Human
<b>Expression Host</b>	E.coli
<b>Sequence</b>	Met 1-Ser 125
<b>Accession</b>	Q9Y2Q5-1
<b>Calculated Molecular Weight</b>	15 kDa
<b>Observed molecular weight</b>	13 kDa
<b>Tag</b>	N-His

## Properties

<b>Purity</b>	> 97 % as determined by reducing SDS-PAGE.
<b>Endotoxin</b>	Please contact us for more information.
<b>Storage</b>	Generally, lyophilized proteins are stable for up to 12 months when stored at -20 to -80°C. Reconstituted protein solution can be stored at 4-8°C for 2-7 days. Aliquots of reconstituted samples are stable at < -20°C for 3 months.
<b>Shipping</b>	This product is provided as lyophilized powder which is shipped with ice packs.
<b>Formulation</b>	Lyophilized from sterile PBS, pH 7.4 Normally 5 % - 8 % trehalose, mannitol and 0.01 % Tween80 are added as protectants before lyophilization. Please refer to the specific buffer information in the printed manual.
<b>Reconstitution</b>	Please refer to the printed manual for detailed information.

## Data



> 97 % as determined by reducing SDS-PAGE.

## Background

Ragulator complex protein LAMTOR2, also known as Endosomal adaptor protein p14, Late endosomal / lysosomal Mp1-interacting protein, Late endosomal / lysosomal adaptor and MAPK and MTOR activator 2, Mitogen-activated protein-binding protein-interacting protein, Roadblock domain-containing protein 3, LAMTOR2, MAPBPIP and ROBLD3, is a protein which belongs to theGAMAD family. LAMTOR2 / ROBLD3 is a regulator of the TOR pathway, a signaling cascade that promotes cell growth in response to growth factors, energy levels, and amino acids. As part of the Ragulator complex, LAMTOR2 / ROBLD3 recruits the Rag GTPases and the mTORC1 complex to lysosomes, a key step in activation of the TOR signaling cascade by amino acids. LAMTOR2 / ROBLD3 is an adapter protein that enhances the

## For Research Use Only

A Reliable Research Partner in Life Science and Medicine

Toll-free: 1-888-852-8623

Web: [www.elabscience.com](http://www.elabscience.com)

Tel: 1-832-243-6086

Email: [techsupport@elabscience.com](mailto:techsupport@elabscience.com)

Fax: 1-832-243-6017

# Recombinant Human LAMTOR2/ROBLD3/MAPBPIP Protein (His Tag)



Catalog Number:PKSH030802

---

efficiency of the MAP kinase cascade facilitating the activation of MAPK2. Defects in LAMTOR2 are the cause of immunodeficiency due to defect in MAPBP-interacting protein (ID-MAPBPIP). This form of primary immunodeficiency syndrome includes congenital neutropenia, partial albinism, short stature and B-cell and cytotoxic T-cell deficiency.

---

## For Research Use Only

A Reliable Research Partner in Life Science and Medicine

Toll-free: 1-888-852-8623

Tel: 1-832-243-6086

Fax: 1-832-243-6017

Web: [www.elabscience.com](http://www.elabscience.com)

Email: [techsupport@elabscience.com](mailto:techsupport@elabscience.com)