

Recombinant Human WFDC2/HE4 Protein (His Tag)

Catalog Number:PKSH030804



Note: Centrifuge before opening to ensure complete recovery of vial contents.

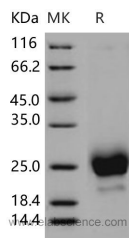
Description

Synonyms	WAP Four-Disulfide Core Domain Protein 2; Epididymal Secretory Protein E4; Major Epididymis-Specific Protein E4; Putative Protease Inhibitor WAP5; WFDC2; HE4; WAP5
Species	Human
Expression Host	HEK293 Cells
Sequence	Met 1-Phe 124
Accession	NP_006094.3
Calculated Molecular Weight	11.3 kDa
Observed molecular weight	23-27 kDa
Tag	C-His

Properties

Purity	> 95 % as determined by reducing SDS-PAGE.
Endotoxin	< 1.0 EU per µg as determined by the LAL method.
Storage	Lyophilized proteins are stable for up to 12 months when stored at -20 to -80°C. Reconstituted protein solution can be stored at 4-8°C for 2-7 days. Aliquots of reconstituted samples are stable at < -20°C for 3 months.
Shipping	This product is provided as lyophilized powder which is shipped with ice packs.
Formulation	Lyophilized from sterile PBS, pH 7.4
Reconstitution	Please refer to the printed manual for detailed information.

Data



Background

WAP four-disulfide core domain protein 2, also known as Epididymal secretory protein E4, Major epididymis-specific protein E4, Putative protease inhibitor WAP5, WFDC2 and HE4, is a secreted protein which contains two WAP domains. WFDC2 / HE4 is a member of a family of stable 4-disulfide core proteins that are secreted at high levels. It is expressed in a number of normal tissues, including male reproductive system, regions of the respiratory tract and nasopharynx. It is highly expressed in a number of tumors cells lines, such ovarian, colon, breast, lung and renal cells lines. Initially described as being exclusively transcribed in the epididymis. WFDC2 may be a component of the innate immune defences of the lung, nasal and oral cavities and suggest that WFDC2 functions in concert with related WAP domain containing proteins in epithelial host defence. WFDC2 re-expression in lung carcinomas may prove to be associated with tumour type and should be studied in further detail. Mammary gland expression of tammar WFDC2 during the course of

For Research Use Only

A Reliable Research Partner in Life Science and Medicine

Toll-free: 1-888-852-8623

Web: www.elabscience.com

Tel: 1-832-243-6086

Email: techsupport@elabscience.com

Fax: 1-832-243-6017

Recombinant Human WFDC2/HE4 Protein (His Tag)

Catalog Number:PKSH030804



lactation showed WFDC2 was elevated during pregnancy, reduced in early lactation and absent in mid-late lactation. WFDC2 / HE4 can undergo a complex series of alternative splicing events that can potentially yield five distinct WAP domain containing protein isoforms.

For Research Use Only

A Reliable Research Partner in Life Science and Medicine

Toll-free: 1-888-852-8623

Tel: 1-832-243-6086

Fax: 1-832-243-6017

Web: www.elabscience.com

Email: techsupport@elabscience.com