

Recombinant Human Cathepsin D/CTSD Protein (His Tag)



Catalog Number:PKSH030822

Note: Centrifuge before opening to ensure complete recovery of vial contents.

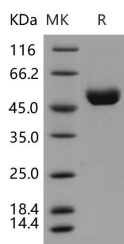
Description

Synonyms	Cathepsin D;CTSD;CLN10;CPSD;HEL-S-130P
Species	Human
Expression Host	HEK293 Cells
Sequence	Met 1-Leu 412
Accession	P07339
Calculated Molecular Weight	44.0 kDa
Observed molecular weight	40-110 kDa
Tag	C-His
Bioactivity	Measured by its ability to bind biotinylated human CTSS-His in a functional ELISA.

Properties

Purity	> 97 % as determined by reducing SDS-PAGE.
Endotoxin	< 1.0 EU per µg of the protein as determined by the LAL method.
Storage	Generally, lyophilized proteins are stable for up to 12 months when stored at -20 to -80°C. Reconstituted protein solution can be stored at 4-8°C for 2-7 days. Aliquots of reconstituted samples are stable at < -20°C for 3 months.
Shipping	This product is provided as lyophilized powder which is shipped with ice packs.
Formulation	Lyophilized from sterile 25mM MES, 150mM NaCl, pH 6.5 Normally 5 % - 8 % trehalose, mannitol and 0.01% Tween80 are added as protectants before lyophilization. Please refer to the specific buffer information in the printed manual.
Reconstitution	Please refer to the printed manual for detailed information.

Data



> 97 % as determined by reducing SDS-PAGE.

Background

Cathepsin D (CTSD); a well known lysosomal aspartyl protease and belongs to the peptidase C1 family; which is a normal and major component of lysosomes; and is found in almost all cells and tissues of mammals. Its mostly described function is intracellular catabolism in lysosomal compartments; other physiological effect include hormone and antigen processing. Cathepsin D has a specificity similar to but narrower than that of pepsin A. Cathepsin D plays an important role in the degradation of proteins; the generation of bioactive proteins; antigen processing; etc. Among different role in cell physiology; a new function of this enzyme is examined. Cathepsin D is an important regulator of apoptotic pathways in cells. It acts at different stage of intrinsic and extrinsic pathway of apoptosis. In addition; CTSD secreted from human

For Research Use Only

A Reliable Research Partner in Life Science and Medicine

Toll-free: 1-888-852-8623

Web: www.elabscience.com

Tel: 1-832-243-6086

Email: techsupport@elabscience.com

Fax: 1-832-243-6017

Recombinant Human Cathepsin D/CTSD Protein (His Tag)

Catalog Number:PKSH030822

DIA • AN®
by Elabscience

prostate carcinoma cells are responsible for the generation of angiostatin; a potent endogenous inhibitor of angiogenesis; suggesting its contribution to the prevention of tumor growth and angiogenesis-dependent growth of metastases.

For Research Use Only

A Reliable Research Partner in Life Science and Medicine

Toll-free: 1-888-852-8623

Tel: 1-832-243-6086

Fax: 1-832-243-6017

Web: www.elabscience.com

Email: techsupport@elabscience.com