

# Recombinant Human PLA2G2D Protein (Fc Tag)

Catalog Number:PKSH030829



**Note:** Centrifuge before opening to ensure complete recovery of vial contents.

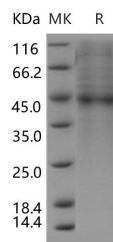
## Description

<b>Synonyms</b>	PLA2IID;sPLA2-IID;sPLA2S;SPLASH
<b>Species</b>	Human
<b>Expression Host</b>	HEK293 Cells
<b>Sequence</b>	Met 1-Cys145
<b>Accession</b>	Q9UNK4
<b>Calculated Molecular Weight</b>	41.5 kDa
<b>Observed molecular weight</b>	44 kDa
<b>Tag</b>	C-hFc

## Properties

<b>Purity</b>	> 85 % as determined by reducing SDS-PAGE.
<b>Endotoxin</b>	< 1.0 EU per µg of the protein as determined by the LAL method.
<b>Storage</b>	Generally, lyophilized proteins are stable for up to 12 months when stored at -20 to -80°C. Reconstituted protein solution can be stored at 4-8°C for 2-7 days. Aliquots of reconstituted samples are stable at < -20°C for 3 months.
<b>Shipping</b>	This product is provided as lyophilized powder which is shipped with ice packs.
<b>Formulation</b>	Lyophilized from sterile PBS, pH 7.4 Normally 5 % - 8 % trehalose, mannitol and 0.01 % Tween80 are added as protectants before lyophilization. Please refer to the specific buffer information in the printed manual.
<b>Reconstitution</b>	Please refer to the printed manual for detailed information.

## Data



> 85 % as determined by reducing SDS-PAGE.

## Background

The enzyme oligosaccharyltransferase (dolichyl-diphosphooligosaccharide-protein glycosyltransferase) (DDOST), or 48-kDa subunit (OST48) is one of the catalytic subunits in this complex, exerts a typical type I membrane topology, containing a large luminal domain, a hydrophobic transmembrane domain and a short cytosolic peptide tail. DDOST/OST48 catalyzes the transfer of a high-mannose oligosaccharide (GlcNac2Man9Glc3) from a dolichol-linked oligosaccharide donor (dolichol-P-GlcNac2Man9Glc3) onto the asparagine acceptor site within an Asn-X-Ser/Thr consensus motif in nascent polypeptide chains across the membrane of the endoplasmic reticulum. The mammalian oligosaccharyltransferase (OST) is an oligomeric complex composed of three type I transmembrane proteins of the endoplasmic reticulum: ribophorin I (RI), ribophorin II (RII), and OST48. OST48 is not a glycoprotein and is not

## For Research Use Only

A Reliable Research Partner in Life Science and Medicine

Toll-free: 1-888-852-8623

Web: [www.elabscience.com](http://www.elabscience.com)

Tel: 1-832-243-6086

Email: [techsupport@elabscience.com](mailto:techsupport@elabscience.com)

Fax: 1-832-243-6017

# Recombinant Human PLA2G2D Protein (Fc Tag)

Catalog Number:PKSH030829



recognized by antibodies to either ribophorin. Like ribophorins I and II, OST48 was found to be an integral membrane protein, with the majority of the polypeptide located within the lumen of the endoplasmic reticulum (ER). OST48 does not show significant amino acid sequence homology to either ribophorin I or II. It had been found that only the luminal domain of RI contains ER retention information. The dilysine motif in OST48 functions as an ER localization motif because OST48 in which the two lysine residues are replaced by serine (OST48ss) is no longer retained in the ER and is found instead also at the plasma membrane.

---

## For Research Use Only

A Reliable Research Partner in Life Science and Medicine

Toll-free: 1-888-852-8623

Tel: 1-832-243-6086

Fax: 1-832-243-6017

Web: [www.elabscience.com](http://www.elabscience.com)

Email: [techsupport@elabscience.com](mailto:techsupport@elabscience.com)