

# Recombinant Human LMAN2/VIP36 Protein (E.coli, His Tag)



Catalog Number:PKSH030834

**Note:** Centrifuge before opening to ensure complete recovery of vial contents.

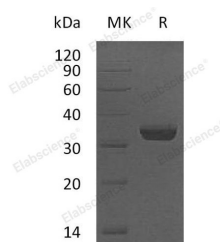
## Description

<b>Synonyms</b>	Vesicular Integral-Membrane Protein VIP36;Glycoprotein GP36b;Lectin Mannose-Binding 2;Vesicular Integral-Membrane Protein 36;VIP36;LMAN2;C5orf8
<b>Species</b>	Human
<b>Expression Host</b>	E.coli
<b>Sequence</b>	As p45-Arg 322
<b>Accession</b>	Q12907
<b>Calculated Molecular Weight</b>	33.2 kDa
<b>Observed molecular weight</b>	30 kDa
<b>Tag</b>	C-His

## Properties

<b>Purity</b>	> 95 % as determined by reducing SDS-PAGE.
<b>Endotoxin</b>	Please contact us for more information.
<b>Storage</b>	Generally, lyophilized proteins are stable for up to 12 months when stored at -20 to -80°C. Reconstituted protein solution can be stored at 4-8°C for 2-7 days. Aliquots of reconstituted samples are stable at < -20°C for 3 months.
<b>Shipping</b>	This product is provided as lyophilized powder which is shipped with ice packs.
<b>Formulation</b>	Lyophilized from sterile 50mM Tris, pH 8.5 Normally 5 % - 8 % trehalose, mannitol and 0.01 % Tween80 are added as protectants before lyophilization. Please refer to the specific buffer information in the printed manual.
<b>Reconstitution</b>	Please refer to the printed manual for detailed information.

## Data



> 95 % as determined by reducing SDS-PAGE.

## Background

The L-type lectin LMAN2 (also known as VIP36) appears to be specifically required for the accumulation of GPRC5B in the Golgi complex and restriction of GPRC5B transport along the exosomal pathway. This may occur due to interference with the adaptor protein GGA1-mediated trans Golgi network-to-endosome transport of GPRC5B. A Golgi-traversing pathway for exosomal release of the cargo protein GPRC5B in which CD2AP facilitates the entry and LMAN2 impedes the exit of the flux; respectively.

## For Research Use Only

A Reliable Research Partner in Life Science and Medicine

Toll-free: 1-888-852-8623

Web: [www.elabscience.com](http://www.elabscience.com)

Tel: 1-832-243-6086

Email: [techsupport@elabscience.com](mailto:techsupport@elabscience.com)

Fax: 1-832-243-6017