

Recombinant Human C6/complement component 6 Protein (His Tag)



Catalog Number:PKSH030844

Note: Centrifuge before opening to ensure complete recovery of vial contents.

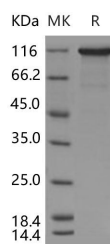
Description

Synonyms	C6
Species	Human
Expression Host	HEK293 Cells
Sequence	Met 1-Ala 934
Accession	AAA59668.1
Calculated Molecular Weight	104 kDa
Observed molecular weight	110 kDa
Tag	C-His

Properties

Purity	> 90 % as determined by reducing SDS-PAGE.
Endotoxin	< 1.0 EU per µg of the protein as determined by the LAL method.
Storage	Generally, lyophilized proteins are stable for up to 12 months when stored at -20 to -80°C. Reconstituted protein solution can be stored at 4-8°C for 2-7 days. Aliquots of reconstituted samples are stable at < -20°C for 3 months.
Shipping	This product is provided as lyophilized powder which is shipped with ice packs.
Formulation	Lyophilized from sterile PBS, pH 7.4 Normally 5 % - 8 % trehalose, mannitol and 0.01 % Tween80 are added as protectants before lyophilization. Please refer to the specific buffer information in the printed manual.
Reconstitution	Please refer to the printed manual for detailed information.

Data



> 90 % as determined by reducing SDS-PAGE.

Background

Neuromodulin, also known as Axonal membrane protein GAP-43, Growth-associated protein 43, Neural phosphoprotein B-50, pp46 and GAP43, is a cell membrane protein which belongs to the neuromodulin family. Neuromodulin / GAP43 contains one IQ domain. Neuromodulin / GAP43 is associated with nerve growth. It is a major component of the motile "growth cones" that form the tips of elongating axons. Neuromodulin / GAP43 is involved in neurite outgrowth, a crucial process for the differentiation of neurons. The sudden infant death syndrome (SIDS) is the main cause of postneonatal infant death and its cause is still unknown. Neuromodulin / GAP43 is a marker of synaptic plasticity and is critical for normal development of the serotonergic innervation. Neuromodulin / GAP43 is a major cortical cytoskeleton-associated and calmodulin binding protein that is widely and abundantly expressed during development, maintained in selected brain

For Research Use Only

A Reliable Research Partner in Life Science and Medicine

Toll-free: 1-888-852-8623

Web: www.elabscience.com

Tel: 1-832-243-6086

Email: techsupport@elabscience.com

Fax: 1-832-243-6017

Recombinant Human C6/complement component 6 Protein (His Tag)



Catalog Number:PKSH030844

structures in the adult, and reinduced during nerve regeneration. CAP23 and GAP43 are functionally related intrinsic determinants of anatomical plasticity. These proteins function by locally promoting subplasmalemmal actin cytoskeleton accumulation.

For Research Use Only

A Reliable Research Partner in Life Science and Medicine

Toll-free: 1-888-852-8623

Tel: 1-832-243-6086

Fax: 1-832-243-6017

Web: www.elabscience.com

Email: techsupport@elabscience.com