

# Recombinant Human SRPK1 Protein (His & GST Tag)

Catalog Number:PKSH030864



**Note:** Centrifuge before opening to ensure complete recovery of vial contents.

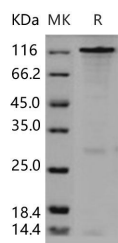
## Description

<b>Synonyms</b>	RP3-422H11.1;SFRSK1
<b>Species</b>	Human
<b>Expression Host</b>	Baculovirus-Insect Cells
<b>Sequence</b>	Glu 2-Ser 655
<b>Accession</b>	AAH38292.1
<b>Calculated Molecular Weight</b>	102 kDa
<b>Observed molecular weight</b>	120 kDa
<b>Tag</b>	N-His-GST

## Properties

<b>Purity</b>	> 80 % as determined by reducing SDS-PAGE.
<b>Endotoxin</b>	< 1.0 EU per µg of the protein as determined by the LAL method.
<b>Storage</b>	Generally, lyophilized proteins are stable for up to 12 months when stored at -20 to -80°C. Reconstituted protein solution can be stored at 4-8°C for 2-7 days. Aliquots of reconstituted samples are stable at < -20°C for 3 months.
<b>Shipping</b>	This product is provided as lyophilized powder which is shipped with ice packs.
<b>Formulation</b>	Lyophilized from sterile 20mM Tris, 500mM NaCl, 10% Glycerol, 0.1mMEDTA, 0.5mM PMSF, 1mM TCEP, pH7.5. Normally 5 % - 8 % trehalose, mannitol and 0.01% Tween80 are added as protectants before lyophilization. Please refer to the specific buffer info
<b>Reconstitution</b>	Please refer to the printed manual for detailed information.

## Data



> 80 % as determined by reducing SDS-PAGE.

## Background

Serine / threonine-protein kinase SRPK1, also known as SFRS protein kinase 1, Serine/arginine-rich protein-specific kinase 1, SR-protein-specific kinase 1 and SRPK1, is a cytoplasm and nucleus protein which belongs to the protein kinase superfamily and CMGC Ser/Thr protein kinase family. Isoform 2 of SRPK1 is predominantly expressed in the testis but is also present at lower levels in heart, ovary, small intestine, liver, kidney, pancreas and skeletal muscle. Isoform 1 of SRPK1 is only seen in the testis, at lower levels than isoform 2. SRPK1 hyperphosphorylates RS domain-containing proteins such as SFRS1, SFRS2 and ZRSR2 on serine residues during metaphase but at lower levels during interphase. SRPK1 plays a central role in the regulatory network for splicing, controlling the intranuclear distribution of splicing

## For Research Use Only

A Reliable Research Partner in Life Science and Medicine

Toll-free: 1-888-852-8623

Web: [www.elabscience.com](http://www.elabscience.com)

Tel: 1-832-243-6086

Email: [techsupport@elabscience.com](mailto:techsupport@elabscience.com)

Fax: 1-832-243-6017

# Recombinant Human SRPK1 Protein (His & GST Tag)

Catalog Number:PKSH030864



factors in interphase cells and the reorganization of nuclear speckles during mitosis. SRPK1 locks onto SFRS1 to form a stable complex and processively phosphorylates the RS domain. SRPK1 appears to mediate HBV core protein phosphorylation which is a prerequisite for pregenomic RNA encapsidation into viral capsids.

---

## For Research Use Only

A Reliable Research Partner in Life Science and Medicine

Toll-free: 1-888-852-8623

Web: [www.elabscience.com](http://www.elabscience.com)

Tel: 1-832-243-6086

Email: [techsupport@elabscience.com](mailto:techsupport@elabscience.com)

Fax: 1-832-243-6017