

Recombinant Human STK23/MSSK1/SRPK3 Protein (His & GST Tag)



Catalog Number:PKSH030897

Note: Centrifuge before opening to ensure complete recovery of vial contents.

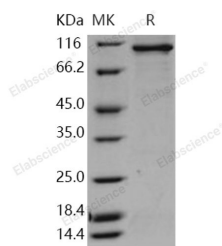
Description

Synonyms	MGC102944;MSSK-1;MSSK1;STK23
Species	Human
Expression Host	Baculovirus-Insect Cells
Sequence	Met 1-Pro 566
Accession	NP_001164231.1
Calculated Molecular Weight	89.7 kDa
Observed molecular weight	100 kDa
Tag	N-His-GST

Properties

Purity	> 85 % as determined by reducing SDS-PAGE.
Endotoxin	< 1.0 EU per µg of the protein as determined by the LAL method.
Storage	Generally, lyophilized proteins are stable for up to 12 months when stored at -20 to -80°C. Reconstituted protein solution can be stored at 4-8°C for 2-7 days. Aliquots of reconstituted samples are stable at < -20°C for 3 months.
Shipping	This product is provided as lyophilized powder which is shipped with ice packs.
Formulation	Lyophilized from sterile 20mM Tris, 500mM NaCl, pH 8.0 Normally 5 % - 8 % trehalose, mannitol and 0.01% Tween80 are added as protectants before lyophilization. Please refer to the specific buffer information in the printed manual.
Reconstitution	Please refer to the printed manual for detailed information.

Data



> 85 % as determined by reducing SDS-PAGE.

Background

Serine / threonine-protein kinase SRPK3, also known as Muscle-specific serine kinase 1, Serine/arginine-rich protein-specific kinase 3, SR-protein-specific kinase 3, Serine / threonine-protein kinase 23, MSSK-1, SRPK3 and MSSK1, is a member of the protein kinase superfamily and CMGC Ser / Thr protein kinase family. SRPK3 is a protein kinase belonging to serine/arginine protein kinases (SRPK) family, which phosphorylates serine / arginine repeat-containing proteins, and is controlled by a muscle-specific enhancer directly regulated by MEF2. SRPK3 / MSSK1 contains oneprotein kinase domain. SRPK3 / MSSK1 is exclusively expressed in skeletal and heart muscle. It is required for normal muscle development. Myocyte enhancer factor 2 (MEF2) plays essential roles in transcriptional control of muscle development. Normal muscle growth and homeostasis require MEF2-dependent signaling by SRPK3.

For Research Use Only

A Reliable Research Partner in Life Science and Medicine

Toll-free: 1-888-852-8623

Web: www.elabscience.com

Tel: 1-832-243-6086

Email: techsupport@elabscience.com

Fax: 1-832-243-6017