

# Recombinant Human HEXA Protein (Subunit A, His Tag)



Catalog Number:PKSH030928

**Note:** Centrifuge before opening to ensure complete recovery of vial contents.

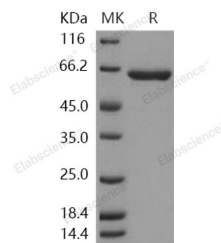
## Description

<b>Synonyms</b>	TSD
<b>Species</b>	Human
<b>Expression Host</b>	Baculovirus-Insect Cells
<b>Sequence</b>	Met 1-Thr 529
<b>Accession</b>	AAD13932.1
<b>Calculated Molecular Weight</b>	59.7 kDa
<b>Observed molecular weight</b>	64 kDa
<b>Tag</b>	C-His
<b>Bioactivity</b>	Measured by its ability to hydrolyze 4-methylumbelliferyl-N-acetyl- $\beta$ -D-glucosaminide (4-MU-Glc-NAc). The specific activity is > 1, 250 pmoles/min/ $\mu$ g.

## Properties

<b>Purity</b>	> 95 % as determined by reducing SDS-PAGE.
<b>Endotoxin</b>	< 1.0 EU per $\mu$ g of the protein as determined by the LAL method.
<b>Storage</b>	Generally, lyophilized proteins are stable for up to 12 months when stored at -20 to -80°C. Reconstituted protein solution can be stored at 4-8°C for 2-7 days. Aliquots of reconstituted samples are stable at < -20°C for 3 months.
<b>Shipping</b>	This product is provided as lyophilized powder which is shipped with ice packs.
<b>Formulation</b>	Lyophilized from sterile 20mM Tris, 500mM NaCl, pH 7.4 Normally 5 % - 8 % trehalose, mannitol and 0.01% Tween80 are added as protectants before lyophilization. Please refer to the specific buffer information in the printed manual.
<b>Reconstitution</b>	Please refer to the printed manual for detailed information.

## Data



> 95 % as determined by reducing SDS-PAGE.

## Background

Wilms' tumor 1-associating protein (WTAP) was previously identified as a protein associated with Wilms' tumor-1 (WT-1) protein that is essential for the development of the genitourinary system. WT1 was originally identified as a tumor suppressor for Wilms' tumor, but it is also overexpressed in a variety of cancer cells. The WTAP-WT1 axis in vascular cells suggest that WTAP is a vital and multifaceted regulator of vascular remodeling. WTAP has been suggested to function in alternative splicing, stabilization of mRNA, and cell growth. Knocking down endogenous WTAP increased Smooth muscle cells (SMCs) proliferation, because of increased DNA synthesis and G(1)/S phase transition, together with

## For Research Use Only

A Reliable Research Partner in Life Science and Medicine

Toll-free: 1-888-852-8623

Web: [www.elabscience.com](http://www.elabscience.com)

Tel: 1-832-243-6086

Email: [techsupport@elabscience.com](mailto:techsupport@elabscience.com)

Fax: 1-832-243-6017

# Recombinant Human HEXA Protein (Subunit A, His Tag)

Catalog Number:PKSH030928



reduced apoptosis. These effects could be the result of WTAP suppressing the transcriptional activity of WT1 in SMCs. WTAP may thus also play a role in messenger RNA processing in mammalian cells, either dependent on or independent of its interaction with WT1.

---

## For Research Use Only

A Reliable Research Partner in Life Science and Medicine

Toll-free: 1-888-852-8623

Tel: 1-832-243-6086

Fax: 1-832-243-6017

Web: [www.elabscience.com](http://www.elabscience.com)

Email: [techsupport@elabscience.com](mailto:techsupport@elabscience.com)