

Recombinant SARS-CoV-2 3C-like Proteinase Protein (His Tag)



Catalog Number:PKSR030465

Note: Centrifuge before opening to ensure complete recovery of vial contents.

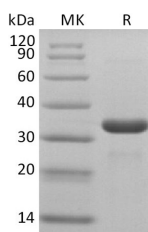
Description

Synonyms	M Proteinase;3CL Proteinase
Species	SARS-CoV-2
Expression Host	E.coli
Sequence	Ser3264-Gln3569
Accession	P0DTC1
Calculated Molecular Weight	36.1 kDa
Observed molecular weight	33 kDa
Tag	N-His

Properties

Purity	> 95 % as determined by reducing SDS-PAGE.
Endotoxin	< 1.0 EU per µg of the protein as determined by the LAL method.
Storage	Store at < -20°C, stable for 6 months. Please minimize freeze-thaw cycles.
Shipping	This product is provided as liquid. It is shipped at frozen temperature with blue ice/gel packs. Upon receipt, store it immediately at < - 20°C.
Formulation	Supplied as a 0.2 µM filtered solution of PBS, 1 mM EDTA, 10% Glycerol, pH 7.4.
Reconstitution	Not Applicable

Data



> 95 % as determined by reducing SDS-PAGE.

Background

The viral main proteinase (M pro , also called 3CL pro), which controls the activities of the coronavirus replication complex. It functions as a cysteine protease engaging in the proteolytic cleavage of the viral precursor polyprotein to a series of functional proteins required for coronavirus replication and is considered as an appealing target for designing anti-SARS agents.

For Research Use Only

A Reliable Research Partner in Life Science and Medicine

Toll-free: 1-888-852-8623

Web: www.elabscience.com

Tel: 1-832-243-6086

Email: techsupport@elabscience.com

Fax: 1-832-243-6017