

# Recombinant Human SLAMF6/Ly108 Protein

Catalog Number:PKSH030960



**Note:** Centrifuge before opening to ensure complete recovery of vial contents.

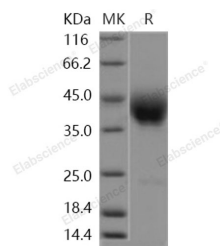
## Description

<b>Synonyms</b>	SLAM Family Member 6;Activating NK Receptor;NK-T-B-Antigen;NTB-A;CD352;SLAMF6;KALI;Ly108;NTBA;SF2000
<b>Species</b>	Human
<b>Expression Host</b>	HEK293 Cells
<b>Sequence</b>	Met 1-Met226
<b>Accession</b>	Q96DU3-1
<b>Calculated Molecular Weight</b>	23.9 kDa
<b>Observed molecular weight</b>	37-43 kDa
<b>Tag</b>	None

## Properties

<b>Purity</b>	> 95 % as determined by reducing SDS-PAGE.
<b>Endotoxin</b>	< 1.0 EU per µg of the protein as determined by the LAL method.
<b>Storage</b>	Generally, lyophilized proteins are stable for up to 12 months when stored at -20 to -80°C. Reconstituted protein solution can be stored at 4-8°C for 2-7 days. Aliquots of reconstituted samples are stable at < -20°C for 3 months.
<b>Shipping</b>	This product is provided as lyophilized powder which is shipped with ice packs.
<b>Formulation</b>	Lyophilized from sterile PBS, pH 7.4 Normally 5 % - 8 % trehalose, mannitol and 0.01 % Tween80 are added as protectants before lyophilization. Please refer to the specific buffer information in the printed manual.
<b>Reconstitution</b>	Please refer to the printed manual for detailed information.

## Data



> 95 % as determined by reducing SDS-PAGE.

## Background

SLAM family member 6; also known as Activating NK receptor; NK-T-B-antigen; NTB-A; SLAMF6; KALI and Ly108; is a single-pass type I membrane protein which belongs to the CD2 subfamily of the immunoglobulin superfamily. SLAMF6 / Ly108 contains one Ig-like (immunoglobulin-like) domain. It is expressed by all (resting and activated) natural killer cells (NK); T- and B-lymphocytes. SLAMF6 / Ly108 triggers cytolytic activity only in natural killer cells (NK) expressing high surface densities of natural cytotoxicity receptors. SLAMF6 / Ly108 is a homodimer. It interacts with PTN6 and; upon phosphorylation; with PTN11 and SH2D1A/SAP. SLAMF6 / Ly108 undergoes tyrosine phosphorylation and associates with the Src homology 2 domain-containing protein (SH2D1A) as well as with SH2 domain-containing

## For Research Use Only

A Reliable Research Partner in Life Science and Medicine

Toll-free: 1-888-852-8623

Web: [www.elabscience.com](http://www.elabscience.com)

Tel: 1-832-243-6086

Email: [techsupport@elabscience.com](mailto:techsupport@elabscience.com)

Fax: 1-832-243-6017

# Recombinant Human SLAMF6/Ly108 Protein

Catalog Number:PKSH030960



phosphatases (SHPs). It may function as a coreceptor in the process of NK cell activation. SLAMF6 / Ly108 can also mediate inhibitory signals in NK cells from X-linked lymphoproliferative patients.

---

## For Research Use Only

A Reliable Research Partner in Life Science and Medicine

Toll-free: 1-888-852-8623

Tel: 1-832-243-6086

Fax: 1-832-243-6017

Web: [www.elabscience.com](http://www.elabscience.com)

Email: [techsupport@elabscience.com](mailto:techsupport@elabscience.com)