

Recombinant Human ANP32A/PHAP1 Protein (His & GST Tag)

Catalog No. PKSH030963

Note: Centrifuge before opening to ensure complete recovery of vial contents.

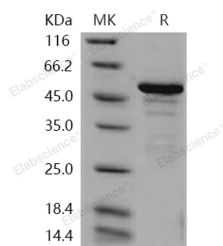
Description

Synonyms	C15orf1;HPPCn;I1PP2A;LANP;MAPM;PHAP1;PHAPI;PP32
Species	Human
Expression Host	E.coli
Sequence	Glu 2-Lys 238
Accession	NP_006296.1
Calculated Molecular Weight	55.4 kDa
Observed molecular weight	50 kDa
Tag	N-His-GST
Bioactivity	Not validated for activity

Properties

Purity	> 85 % as determined by reducing SDS-PAGE.
Endotoxin	Please contact us for more information.
Storage	Generally, lyophilized proteins are stable for up to 12 months when stored at -20 to -80°C. Reconstituted protein solution can be stored at 4-8°C for 2-7 days. Aliquots of reconstituted samples are stable at < -20°C for 3 months.
Shipping	This product is provided as lyophilized powder which is shipped with ice packs.
Formulation	Lyophilized from sterile 20mM Tris, 10% glycerol, 1mM DTT, 0.5mM GSH Normally 5 % - 8 % trehalose, mannitol and 0.01% Tween80 are added as protectants before lyophilization. Please refer to the specific buffer information in the printed manual.
Reconstitution	Please refer to the printed manual for detailed information.

Data



> 85 % as determined by reducing SDS-PAGE.

Background

acidic leucine-rich nuclear phosphoprotein 32 family member A, also known as acidic nuclear phosphoprotein pp32, Leucine-rich acidic nuclear protein, Mapmodulin, Potent heat-stable protein phosphatase 2A inhibitor I1PP2A, Putative

For Research Use Only

HLA-DR-associated protein I, PHAPI and ANP32A, is a nucleus, cytoplasm and endoplasmic reticulum. ANP32A / LANP is expressed in all tissues tested. It is highly expressed in kidney and skeletal muscle, moderate levels of expression is in brain, placenta and pancreas. ANP32A / LANP is weakly expressed in lung. It is found in all regions of the brain examined (amygdala, caudate nucleus, corpus callosum, hippocampus and thalamus), with highest levels in amygdala. ANP32A / LANP is a component of the SET complex, which also contains SET, APEX1, HMGB2 and NME1. It directly interacts with SET. ANP32A / LANP also interacts with ATXN1/SCA1. ANP32A / LANP is implicated in a number of cellular processes, including proliferation, differentiation, caspase-dependent and caspase-independent apoptosis, suppression of transformation (tumor suppressor), inhibition of protein phosphatase 2A, regulation of mRNA trafficking and stability in association with ELAVL1, and inhibition of acetyltransferases as part of the INHAT (inhibitor of histone acetyltransferases) complex. ANP32A / LANP plays a role in E4F1-mediated transcriptional repression.