

Recombinant Human Fetuin-B/FETUB Protein (His Tag)

Catalog No. PKSH030988

Note: Centrifuge before opening to ensure complete recovery of vial contents.

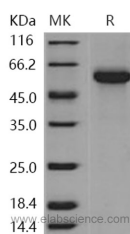
Description

Synonyms	Fetuin-B; 16G2; Fetuin-Like Protein IRL685; Gugu; FETUB
Species	Human
Expression Host	HEK293 Cells
Sequence	Met 1-Pro 382
Accession	NP_055190.2
Calculated Molecular Weight	41.7 kDa
Observed molecular weight	55 kDa
Tag	C-His

Properties

Purity	> 95 % as determined by reducing SDS-PAGE.
Storage	Lyophilized proteins are stable for up to 12 months when stored at -20 to -80°C. Reconstituted protein solution can be stored at 4-8°C for 2-7 days. Aliquots of reconstituted samples are stable at < -20°C for 3 months.
Shipping	This product is provided as lyophilized powder which is shipped with ice packs.
Formulation	Lyophilized from sterile PBS, pH 7.4
Reconstitution	Please refer to the printed manual for detailed information.

Data



Background

Fetuin-B, also known as Fetuin-like protein IRL685 and FETUB, is a secreted protein which belongs to the fetuin family. Fetuin-B / FETUB contains two cystatin domains. Fetuin-B is a member of the fetuin family, part of the cystatin superfamily of cysteine protease inhibitors. Fetuins have been implicated in several diverse functions, including osteogenesis and bone resorption. Fetuin-A has been identified as a major protein during fetal life and is also involved in important functions such as protease inhibitory activities and development-associated regulation of calcium metabolism and osteogenesis. Fetuin-A is a key partner in the recovery phase of an acute inflammatory response. Fetuin-B / FETUB is found at least in human and rodents. It is unambiguously a paralogue of Fetuin-A. Fetuin-A and Fetuin-B exhibit

For Research Use Only

significant differences at the amino acid sequence level, notably including variations with respect to the archetypal fetuin-specific signature.

For Research Use Only

Toll-free: 1-888-852-8623

Web: www.elabscience.com

Tel: 1-832-243-6086

Email: techsupport@elabscience.com

Fax: 1-832-243-6017