

# Recombinant Human TWF1/Twinfilin-1 Protein

Catalog Number:PKSH030991



**Note:** Centrifuge before opening to ensure complete recovery of vial contents.

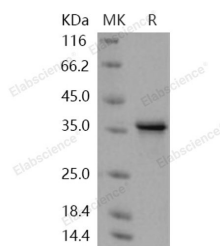
## Description

<b>Synonyms</b>	A6;MGC23788;MGC41876;PTK9
<b>Species</b>	Human
<b>Expression Host</b>	E.coli
<b>Sequence</b>	Met 1-Asp 252
<b>Accession</b>	Q12792-4
<b>Calculated Molecular Weight</b>	29 kDa
<b>Observed molecular weight</b>	36 kDa
<b>Tag</b>	None

## Properties

<b>Purity</b>	> 94 % as determined by reducing SDS-PAGE.
<b>Endotoxin</b>	Please contact us for more information.
<b>Storage</b>	Generally, lyophilized proteins are stable for up to 12 months when stored at -20 to -80°C. Reconstituted protein solution can be stored at 4-8°C for 2-7 days. Aliquots of reconstituted samples are stable at < -20°C for 3 months.
<b>Shipping</b>	This product is provided as lyophilized powder which is shipped with ice packs.
<b>Formulation</b>	Lyophilized from sterile PBS, pH 7.4, 10% glycerol Normally 5 % - 8 % trehalose, mannitol and 0.01% Tween80 are added as protectants before lyophilization. Please refer to the specific buffer information in the printed manual.
<b>Reconstitution</b>	Please refer to the printed manual for detailed information.

## Data



> 94 % as determined by reducing SDS-PAGE.

## Background

Twinfilin-1; also known as Protein A6; Protein tyrosine kinase 9; TWF1 and PTK9; is a cytoplasm protein which belongs to the actin-binding proteins ADF family and Twinfilin subfamily. Twinfilin-1 (TWF1 / PTK9 ) is a highly conserved actin monomer-binding protein that regulates cytoskeletal dynamics in organisms from yeast to mammals. In addition to the mammalian twinfilin-1; a second protein with approximately 65% sequence identity to twinfilin-1 exists in mouse and humans. TWF1 / PTK9 is expressed at high levels in the colon; testis; ovary; prostate and lung. It is expressed at lower levels in the brain; bladder and heart. It is not detected in liver. TWF1 / PTK9 is an actin-binding protein involved in motile and morphological processes. It inhibits actin polymerization; likely by sequestering G-actin. By capping the barbed ends of filaments; it also regulates motility. TWF1 / PTK9 seems to play an important role in clathrin-mediated

## For Research Use Only

A Reliable Research Partner in Life Science and Medicine

Toll-free: 1-888-852-8623

Web: [www.elabscience.com](http://www.elabscience.com)

Tel: 1-832-243-6086

Email: [techsupport@elabscience.com](mailto:techsupport@elabscience.com)

Fax: 1-832-243-6017

# Recombinant Human TWF1/Twinfilin-1 Protein

Catalog Number:PKSH030991



endocytosis and distribution of endocytic organelles.

---

## For Research Use Only

A Reliable Research Partner in Life Science and Medicine

Toll-free: 1-888-852-8623

Web: [www.elabscience.com](http://www.elabscience.com)

Tel: 1-832-243-6086

Email: [techsupport@elabscience.com](mailto:techsupport@elabscience.com)

Fax: 1-832-243-6017