

# Recombinant Human ADM/Adrenomedullin Protein (Fc Tag)



Catalog Number:PKSH031046

**Note:** Centrifuge before opening to ensure complete recovery of vial contents.

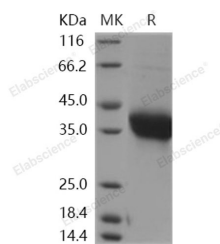
## Description

<b>Synonyms</b>	AM;PAMP
<b>Species</b>	Human
<b>Expression Host</b>	HEK293 Cells
<b>Sequence</b>	Tyr95-Tyr146
<b>Accession</b>	P35318
<b>Calculated Molecular Weight</b>	38 kDa
<b>Observed molecular weight</b>	39 kDa
<b>Tag</b>	N-hFc

## Properties

<b>Purity</b>	> 93 % as determined by reducing SDS-PAGE.
<b>Endotoxin</b>	< 1.0 EU per µg of the protein as determined by the LAL method.
<b>Storage</b>	Generally, lyophilized proteins are stable for up to 12 months when stored at -20 to -80°C. Reconstituted protein solution can be stored at 4-8°C for 2-7 days. Aliquots of reconstituted samples are stable at < -20°C for 3 months.
<b>Shipping</b>	This product is provided as lyophilized powder which is shipped with ice packs.
<b>Formulation</b>	Lyophilized from sterile PBS, pH 7.4 Normally 5 % - 8 % trehalose, mannitol and 0.01 % Tween80 are added as protectants before lyophilization. Please refer to the specific buffer information in the printed manual.
<b>Reconstitution</b>	Please refer to the printed manual for detailed information.

## Data



> 93 % as determined by reducing SDS-PAGE.

## Background

Adrenomedullin consists of 52 amino acids and is a member of the adrenomedullin family. It is a hypotensive peptide and has 1 intramolecular disulfide bond. It seems that adrenomedullin has a slight homology with the calcitonin gene-related peptide. Adrenomedullin has a highly expression in pheochromocytoma and adrenal medulla. It also can be detected in lung, ventricle and kidney tissues. Adrenomedullin and PAMP are potent hypotensive and vasodilator agents. Numerous actions have been reported most related to the physiologic control of fluid and electrolyte homeostasis. In the kidney, adrenomedullin is diuretic and natriuretic, and both adrenomedullin and PAMP inhibit aldosterone secretion by direct adrenal actions. In pituitary gland, both peptides at physiologically relevant doses inhibit basal ACTH secretion. Both peptides appear to act in brain and pituitary gland to facilitate the loss of plasma volume, actions which complement

## For Research Use Only

A Reliable Research Partner in Life Science and Medicine

Toll-free: 1-888-852-8623

Web: [www.elabscience.com](http://www.elabscience.com)

Tel: 1-832-243-6086

Email: [techsupport@elabscience.com](mailto:techsupport@elabscience.com)

Fax: 1-832-243-6017

# Recombinant Human ADM/Adrenomedullin Protein (Fc Tag)



Catalog Number:PKSH031046

---

their hypotensive effects in blood vessels. It is believed that adrenomedullin functions through combinations of the calcitonin receptor like receptor and receptor activity-modifying proteins complexes, as well as CGRP receptors.

---

## For Research Use Only

A Reliable Research Partner in Life Science and Medicine

Toll-free: 1-888-852-8623

Tel: 1-832-243-6086

Fax: 1-832-243-6017

Web: [www.elabscience.com](http://www.elabscience.com)

Email: [techsupport@elabscience.com](mailto:techsupport@elabscience.com)