

# Recombinant Human Neuregulin-1/NRG1-β1 Protein (EGF Domain, Fc Tag)

**DIA·AN**<sup>®</sup>  
by Elabscience

Catalog Number:PKSH031068

**Note:** Centrifuge before opening to ensure complete recovery of vial contents.

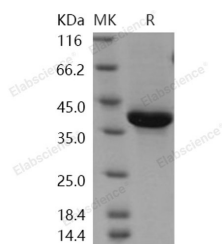
## Description

<b>Synonyms</b>	Pro-neuregulin-1;Neuregulin-1 beta 1;NRG1-beta 1;HRG1-beta 1;EGF;NRG1;GGF;HGL;HRGA;NDF;SMDF;
<b>Species</b>	Human
<b>Expression Host</b>	HEK293 Cells
<b>Sequence</b>	Thr 176-Lys 246
<b>Accession</b>	Q02297-6
<b>Calculated Molecular Weight</b>	36.7 kDa
<b>Observed molecular weight</b>	38 kDa
<b>Tag</b>	N-hFc
<b>Bioactivity</b>	1. Immobilized Rhesus ErbB3 at 2 µg/mL (100 µl/well) can bind human NRG1 (isoform Beta1), The EC50 of human NRG1 (isoform Beta1) is 0.58 µg/mL. 2. Immobilized human ErbB3 at 2 µg/mL (100 µl/well) can bind human NRG1 (isoform Beta1), The EC50 of human NRG1 (isoform Beta1) is 0.43 µg/mL.

## Properties

<b>Purity</b>	> 86 % as determined by reducing SDS-PAGE.
<b>Endotoxin</b>	< 1.0 EU per µg of the protein as determined by the LAL method.
<b>Storage</b>	Generally, lyophilized proteins are stable for up to 12 months when stored at -20 to -80°C. Reconstituted protein solution can be stored at 4-8°C for 2-7 days. Aliquots of reconstituted samples are stable at < -20°C for 3 months.
<b>Shipping</b>	This product is provided as lyophilized powder which is shipped with ice packs.
<b>Formulation</b>	Lyophilized from sterile PBS, pH 7.4 Normally 5 % - 8 % trehalose, mannitol and 0.01% Tween80 are added as protectants before lyophilization. Please refer to the specific buffer information in the printed manual.
<b>Reconstitution</b>	Please refer to the printed manual for detailed information.

## Data



> 86 % as determined by reducing SDS-PAGE.

## Background

Neuregulin 1 or NRG1 is one of four proteins in the neuregulin family that act on the EGFR family of receptors. This growth factor was originally identified as a 44-kD glycoprotein that interacts with the NEU / ERBB2 receptor tyrosine kinase to increase its phosphorylation on tyrosine residues. NRG1 is a trophic factor that has been implicated in neural

## For Research Use Only

A Reliable Research Partner in Life Science and Medicine

Toll-free: 1-888-852-8623

Web: [www.elabscience.com](http://www.elabscience.com)

Tel: 1-832-243-6086

Email: [techsupport@elabscience.com](mailto:techsupport@elabscience.com)

Fax: 1-832-243-6017

# Recombinant Human Neuregulin-1/NRG1-β1 Protein (EGF Domain, Fc Tag)



Catalog Number:PKSH031068

---

development; neurotransmission; and synaptic plasticity. NRG1 has multiple isoforms that are generated by usage of different promoters and alternative splicing of a single gene. Neuregulin 1 (NRG1) is essential for the development and function of multiple organ systems; and its dysregulation has been linked to diseases such as cancer and schizophrenia. NRG1 is a schizophrenia candidate gene and plays an important role in brain development and neural function. Schizophrenia is a complex disorder; with etiology likely due to epistasis.

---

## For Research Use Only

A Reliable Research Partner in Life Science and Medicine

Toll-free: 1-888-852-8623

Tel: 1-832-243-6086

Fax: 1-832-243-6017

Web: [www.elabscience.com](http://www.elabscience.com)

Email: [techsupport@elabscience.com](mailto:techsupport@elabscience.com)