

Recombinant Human CFL2/cofilin 2/ADF Protein (His Tag)



Catalog Number:PKSH031115

Note: Centrifuge before opening to ensure complete recovery of vial contents.

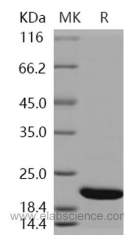
Description

Synonyms	NEM7
Species	Human
Expression Host	E.coli
Sequence	Ala 2-Leu 166
Accession	Q9Y281-1
Calculated Molecular Weight	20.4 kDa
Observed molecular weight	21 kDa
Tag	N-His

Properties

Purity	> 98 % as determined by reducing SDS-PAGE.
Endotoxin	Please contact us for more information.
Storage	Generally, lyophilized proteins are stable for up to 12 months when stored at -20 to -80°C. Reconstituted protein solution can be stored at 4-8°C for 2-7 days. Aliquots of reconstituted samples are stable at < -20°C for 3 months.
Shipping	This product is provided as lyophilized powder which is shipped with ice packs.
Formulation	Lyophilized from sterile PBS, pH 7.5 Normally 5 % - 8 % trehalose, mannitol and 0.01 % Tween80 are added as protectants before lyophilization. Please refer to the specific buffer information in the printed manual.
Reconstitution	Please refer to the printed manual for detailed information.

Data



> 98 % as determined by reducing SDS-PAGE.

Background

Cofilin 2 (muscle), also known as CFL2, is a member of cofilin family of the actin-binding protein superfamily. Cofilin2 shows significant homology to the other two members: cofilin 1 and DSTN, through its entire sequence, and contains residues conserved among the cofilin family that are responsible for actin-binding. Cofilin 2 (CFL2) is an important regulator of striated myocyte function. Purified cofilin 2 depolymerized actin filaments in a dose- and pH-dependent manner and reduced the apparent viscosity of an actin solution, although they did not co-sediment with actin filaments at all. Cofilin2 is not expressed in vegetative cells, but is transiently induced during the aggregation stage of development, whereas cofilin 1 was predominantly expressed in vegetative cells.

For Research Use Only

A Reliable Research Partner in Life Science and Medicine

Toll-free: 1-888-852-8623

Web: www.elabscience.com

Tel: 1-832-243-6086

Email: techsupport@elabscience.com

Fax: 1-832-243-6017