

Recombinant Human IGSF3/EWI-3 Protein (His Tag)

Catalog No. PKSH031166

Note: Centrifuge before opening to ensure complete recovery of vial contents.

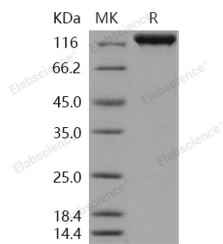
Description

| | |
|------------------------------------|----------------------------|
| Synonyms | EWI-3;LCDD;V8 |
| Species | Human |
| Expression Host | HEK293 Cells |
| Sequence | Met 1-Ala 1124 |
| Accession | O75054-1 |
| Calculated Molecular Weight | 126.6 kDa |
| Observed molecular weight | 140 kDa |
| Tag | C-His |
| Bioactivity | Not validated for activity |

Properties

| | |
|-----------------------|---------------------------------------------------------------------------------------------------------------------------------------------------------------------------------------------------------------------------------------|
| Purity | > 98 % as determined by reducing SDS-PAGE. |
| Endotoxin | < 1.0 EU per µg of the protein as determined by the LAL method. |
| Storage | Generally, lyophilized proteins are stable for up to 12 months when stored at -20 to -80°C. Reconstituted protein solution can be stored at 4-8°C for 2-7 days. Aliquots of reconstituted samples are stable at < -20°C for 3 months. |
| Shipping | This product is provided as lyophilized powder which is shipped with ice packs. |
| Formulation | Lyophilized from sterile PBS, pH 7.4 Normally 5 % - 8 % trehalose, mannitol and 0.01% Tween80 are added as protectants before lyophilization. Please refer to the specific buffer information in the printed manual. |
| Reconstitution | Please refer to the printed manual for detailed information. |

Data



> 98 % as determined by reducing SDS-PAGE.

Background

Immunoglobulin superfamily member 3 (IGSF3), also known as Glu-Trp-Ile EWI motif-containing protein 3, IgSF3 and EWI-3 and IGSF3, is a single-pass type I membrane protein which belongs to the EWI subfamily of the Ig Superfamily of

For Research Use Only

molecules. IGSF3 has an overall structural similarity and strong sequence similarity to V7, a human leukocyte surface protein. IGSF3 contains eight Ig-like C2-type (immunoglobulin-like) domains. IGSF3 is expressed in a wide range of tissues with high expression in Placenta, kidney and lung. EWI-2 is part of a novel Ig subfamily that includes EWI-F (F2alpha receptor regulatory protein (FPRP), CD9P-1), EWI-3 (IGSF3), and EWI-101 (CD101). All four members of this Ig subfamily contain a Glu-Trp-Ile (EWI) motif not seen in other Ig proteins. Human IGSF3 shares 92 % aa identity with mouse IGSF3.