

Recombinant Human Semaphorin 6A/SEMA6A Protein (His Tag)

Catalog No. PKSH031217

Note: Centrifuge before opening to ensure complete recovery of vial contents.

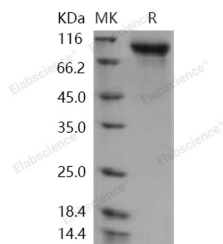
Description

Synonyms	HT018;SEMA;SEMA6A1;SEMAQ;VIA
Species	Human
Expression Host	HEK293 Cells
Sequence	Met 1-Thr 649
Accession	NP_065847.1
Calculated Molecular Weight	72.2 kDa
Observed molecular weight	85-95 kDa
Tag	C-His
Bioactivity	Not validated for activity

Properties

Purity	> 90 % as determined by reducing SDS-PAGE.
Endotoxin	< 1.0 EU per µg of the protein as determined by the LAL method.
Storage	Generally, lyophilized proteins are stable for up to 12 months when stored at -20 to -80°C. Reconstituted protein solution can be stored at 4-8°C for 2-7 days. Aliquots of reconstituted samples are stable at < -20°C for 3 months.
Shipping	This product is provided as lyophilized powder which is shipped with ice packs.
Formulation	Lyophilized from sterile PBS, pH 7.4 Normally 5 % - 8 % trehalose, mannitol and 0.01% Tween80 are added as protectants before lyophilization. Please refer to the specific buffer information in the printed manual.
Reconstitution	Please refer to the printed manual for detailed information.

Data



> 90 % as determined by reducing SDS-PAGE.

Background

Regenerating islet-derived protein 4, also known as REG-like protein, REG4, GISP and RELP, a member of the regenerating gene family belonging to the calcium (C-type) dependent lectin superfamily, has been found to be involved

For Research Use Only

in malignancy in several different organs including the stomach, colorectum, pancreas and prostate. It is highly expressed in the gastrointestinal tract and markedly up-regulated in colon adenocarcinoma, pancreatic cancer, gastric adenocarcinoma, and inflammatory bowel disease. Expression of the Reg4 in different cell types has been associated with regeneration, cell growth and cell survival, cell adhesion and resistance to apoptosis. REG4 protein overexpression is associated with an unfavorable response to preoperative chemoradiotherapy and may be used as a predictive biomarker clinically. REG4 may play an important role in the development and progression of colorectal cancer, as well as in intestinal morphogenesis and epithelium restitution.