

# Recombinant Human ABHD4 Protein (His Tag)

Catalog Number:PKSH031257



**Note:** Centrifuge before opening to ensure complete recovery of vial contents.

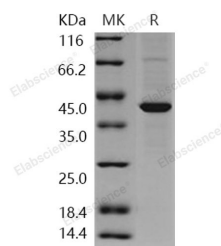
## Description

<b>Synonyms</b>	ABH4
<b>Species</b>	Human
<b>Expression Host</b>	Baculovirus-Insect Cells
<b>Sequence</b>	Met 1-Asp 342
<b>Accession</b>	NP_071343.2
<b>Calculated Molecular Weight</b>	41.0 kDa
<b>Observed molecular weight</b>	40 kDa
<b>Tag</b>	N-His

## Properties

<b>Purity</b>	> 82 % as determined by reducing SDS-PAGE.
<b>Endotoxin</b>	< 1.0 EU per µg of the protein as determined by the LAL method.
<b>Storage</b>	Generally, lyophilized proteins are stable for up to 12 months when stored at -20 to -80°C. Reconstituted protein solution can be stored at 4-8°C for 2-7 days. Aliquots of reconstituted samples are stable at < -20°C for 3 months.
<b>Shipping</b>	This product is provided as lyophilized powder which is shipped with ice packs.
<b>Formulation</b>	Lyophilized from sterile 50mM Tris, 100mM NaCl, pH 8.0 Normally 5 % - 8 % trehalose, mannitol and 0.01% Tween80 are added as protectants before lyophilization. Please refer to the specific buffer information in the printed manual.
<b>Reconstitution</b>	Please refer to the printed manual for detailed information.

## Data



> 82 % as determined by reducing SDS-PAGE.

## Background

Abhydrolase domain containing 4 (ABHD4), also known as alpha/beta-hydrolase 4 (ABH4), or lyso-N-acylphosphatidylethanolamine lipase, which belongs to the ABHD4/ABHD5 subfamily of peptidase S33 family. Abhydrolase domain containing (ABHD) gene was a small group belongs to alpha/beta hydrolase superfamily. Known members of this group are all found to be involved in important biochemical processes and related to various diseases. The alpha/beta-hydrolase 4 (ABH4) is a lysophospholipase/phospholipase B that selectively hydrolyzes N-acyl phosphatidylethanolamines (NAPEs) and lysoNAPEs. ABH4 accepts lysoNAPEs bearing both saturated and polyunsaturated N-acyl chains as substrates and displays a distribution that closely mirrors lysoNAPE-lipase activity in mouse tissues. The existence of an NAPE-PLD-independent route for NAE biosynthesis and suggest that ABH4 plays a

## For Research Use Only

A Reliable Research Partner in Life Science and Medicine

Toll-free: 1-888-852-8623

Web: [www.elabscience.com](http://www.elabscience.com)

Tel: 1-832-243-6086

Email: [techsupport@elabscience.com](mailto:techsupport@elabscience.com)

Fax: 1-832-243-6017

# Recombinant Human ABHD4 Protein (His Tag)

Catalog Number:PKSH031257



role in this metabolic pathway by acting as a (lyso)NAPE-selective lipase.

---

## For Research Use Only

A Reliable Research Partner in Life Science and Medicine

Toll-free: 1-888-852-8623

Tel: 1-832-243-6086

Fax: 1-832-243-6017

Web: [www.elabscience.com](http://www.elabscience.com)

Email: [techsupport@elabscience.com](mailto:techsupport@elabscience.com)