

# Recombinant Human SR-BI/CD36L1 Protein (His & Fc Tag)(Active)



Catalog Number:PKSH031283

**Note:** Centrifuge before opening to ensure complete recovery of vial contents.

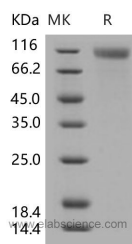
## Description

<b>Synonyms</b>	CD36L1;CLA-1;CLA1;HDLQTL6;SR-BI;SRB1
<b>Species</b>	Human
<b>Expression Host</b>	HEK293 Cells
<b>Sequence</b>	Pro 33-Tyr 443
<b>Accession</b>	NP_005496.4
<b>Calculated Molecular Weight</b>	78 kDa
<b>Observed molecular weight</b>	110-115 kDa
<b>Tag</b>	C-His & Fc
<b>Bioactivity</b>	1. Measured by its ability to bind recombinant mouse ApoAI in a functional ELISA.2. Measured by its ability to bind recombinant Human ApoAI in a functional ELISA.

## Properties

<b>Purity</b>	> 98 % as determined by reducing SDS-PAGE.
<b>Endotoxin</b>	< 1.0 EU per µg as determined by the LAL method.
<b>Storage</b>	Lyophilized proteins are stable for up to 12 months when stored at -20 to -80°C. Reconstituted protein solution can be stored at 4-8°C for 2-7 days. Aliquots of reconstituted samples are stable at < -20°C for 3 months.
<b>Shipping</b>	This product is provided as lyophilized powder which is shipped with ice packs.
<b>Formulation</b>	Lyophilized from sterile PBS, pH 7.4
<b>Reconstitution</b>	Please refer to the printed manual for detailed information.

## Data



## Background

Scavenger receptor class B, member 1 (SCARB1), also known as CD36L1, is a member of the scavenger receptor family. SCARB1 is expressed primarily in liver and non placental steroidogenic tissues, and predominantly localized to cholesterol and sphingomyelin-enriched domains within the plasma membrane. SCARB1 is proposed as a receptor for different ligands such as phospholipids, cholesterol ester, lipoproteins, phosphatidylserine and apoptotic cells, and is involved in a wide variety of physiological processes. As a key component in the reverse cholesterol transport pathway, SCARB1 binds high density lipoproteins (HDLs) and mediates selective cholesterol uptake by a mechanism distinct from the LDL pathway. High density lipoproteins (HDLs) play a critical role in cholesterol metabolism and their plasma concentrations are inversely correlated with risk for atherosclerosis. SCARB1 may thus serve as a useful marker that

## For Research Use Only

A Reliable Research Partner in Life Science and Medicine

Toll-free: 1-888-852-8623

Web: [www.elabscience.com](http://www.elabscience.com)

Tel: 1-832-243-6086

Email: [techsupport@elabscience.com](mailto:techsupport@elabscience.com)

Fax: 1-832-243-6017

# Recombinant Human SR-BI/CD36L1 Protein (His & Fc Tag)(Active)



Catalog Number:PKSH031283

---

predicts variation in baseline lipid levels and postprandial lipid response. The mouse SCARB1 has been shown to exert actions in determining the levels of plasma lipoprotein cholesterol and the accumulation of cholesterol stores in the adrenal gland.

---

## For Research Use Only

A Reliable Research Partner in Life Science and Medicine

Toll-free: 1-888-852-8623

Tel: 1-832-243-6086

Fax: 1-832-243-6017

Web: [www.elabscience.com](http://www.elabscience.com)

Email: [techsupport@elabscience.com](mailto:techsupport@elabscience.com)