

## Recombinant Human SerpinI2 Protein (His Tag)

Catalog No. PKSH031311

**Note:** Centrifuge before opening to ensure complete recovery of vial contents.

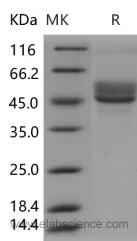
### Description

<b>Synonyms</b>	SERPINI2;Serpine I2;Myoepithelium-derived serine protease inhibitor;Pancreas-specific protein TSA2004;Peptidase inhibitor 14;PI-14;MEPI;PI14;MEPI;PANCYPIN;PI14;TSA2004
<b>Species</b>	Human
<b>Expression Host</b>	HEK293 Cells
<b>Sequence</b>	Met 1-Leu 405
<b>Accession</b>	NP_006208.1
<b>Calculated Molecular Weight</b>	45.5 kDa
<b>Observed molecular weight</b>	45-55 kDa
<b>Tag</b>	C-His

### Properties

<b>Purity</b>	> 90 % as determined by reducing SDS-PAGE.
<b>Storage</b>	Lyophilized proteins are stable for up to 12 months when stored at -20 to -80°C. Reconstituted protein solution can be stored at 4-8°C for 2-7 days. Aliquots of reconstituted samples are stable at < -20°C for 3 months.
<b>Shipping</b>	This product is provided as lyophilized powder which is shipped with ice packs.
<b>Formulation</b>	Lyophilized from sterile PBS, pH 7.4
<b>Reconstitution</b>	Please refer to the printed manual for detailed information.

### Data



### Background

Serpins are the largest and most diverse family of serine protease inhibitors which are involved in a number of fundamental biological processes such as blood coagulation, complement activation, fibrinolysis, angiogenesis, inflammation and tumor suppression and are expressed in a cell-specific manner. Serpins are a group of proteins with similar structures that were first identified as a set of proteins able to inhibit proteases. The acronym serpin was originally coined because many serpins inhibit chymotrypsin-like serine proteases (serine protease inhibitors). Over 1000 serpins

### For Research Use Only

have been identified. Serpin-I2, also known as myoepithelium-derived serine protease inhibitor, Pancreas-specific protein TSA2004, Peptidase inhibitor 14, PI14, SERPINI2 and MEPI, is a secreted protein which belongs to the serpin family. It is expressed in pancreas and adipose tissues. SERPINI2 deficiency directly results in the acinar cell apoptosis and malabsorption.