

# Recombinant Human Angiotensinogen/AGT Protein (His Tag)



Catalog Number:PKSH031317

**Note:** Centrifuge before opening to ensure complete recovery of vial contents.

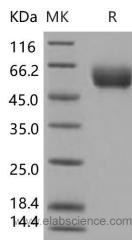
## Description

<b>Synonyms</b>	Angiotensinogen;Serpins A8; AGT and SERPINA8;ANHU
<b>Species</b>	Human
<b>Expression Host</b>	HEK293 Cells
<b>Sequence</b>	Met 1-Ala 485
<b>Accession</b>	NP_000020.1
<b>Calculated Molecular Weight</b>	51.2 kDa
<b>Observed molecular weight</b>	55-60 kDa
<b>Tag</b>	C-His

## Properties

<b>Purity</b>	> 98 % as determined by reducing SDS-PAGE.
<b>Endotoxin</b>	< 1.0 EU per µg as determined by the LAL method.
<b>Storage</b>	Lyophilized proteins are stable for up to 12 months when stored at -20 to -80°C. Reconstituted protein solution can be stored at 4-8°C for 2-7 days. Aliquots of reconstituted samples are stable at < -20°C for 3 months.
<b>Shipping</b>	This product is provided as lyophilized powder which is shipped with ice packs.
<b>Formulation</b>	Lyophilized from sterile PBS, pH 7.4
<b>Reconstitution</b>	Please refer to the printed manual for detailed information.

## Data



## Background

Angiotensinogen, also known as AGT and SerpinA8, is a member of the serpin family. It is an  $\alpha$ -2-globulin that is produced constitutively and released into the circulation mainly by the liver. Angiotensinogen is an essential component of the renin-angiotensin system (RAS) and a potent regulator of blood pressure. Angiotensinogen can be schematically considered to consist of a combination of an angiotensin I (Ang I) function, located at the N-terminal end, and the presence of a serpin (serine protease inhibitor) structure at the opposite end. Angiotensinogen is cleaved into three chains: Angiotensin-1 (Ang I), Angiotensin-2 (Ang II), and Angiotensin-3 (Ang III). Angiotensin-1 is a substrate of ACE (angiotensin converting enzyme) that removes a dipeptide to yield the physiologically active peptide angiotensin-2. Angiotensin-1 and angiotensin-2 can be further processed to generate angiotensin-3, angiotensin-4. Angiotensin 1-7 is cleaved from angiotensin-2 by ACE2. Angiotensin-2 acts directly on vascular smooth muscle as a potent vasoconstrictor, affects cardiac contractility and heart rate through its action on the sympathetic nervous system. Defects in AGT are associated with susceptibility to essential hypertension and renal tubular dysgenesis (RTD). Several serpins (antithrombin,

## For Research Use Only

A Reliable Research Partner in Life Science and Medicine

Toll-free: 1-888-852-8623

Web: [www.elabscience.com](http://www.elabscience.com)

Tel: 1-832-243-6086

Email: [techsupport@elabscience.com](mailto:techsupport@elabscience.com)

Fax: 1-832-243-6017

# Recombinant Human Angiotensinogen/AGT Protein (His Tag)



Catalog Number:PKSH031317

---

maspin, pigment epithelial-derived factor, and kallistatin) have been recently shown to exert an antiangiogenic activity, suggesting a common mechanism of endothelial cell proliferation and migration. Angiotensinogen/AGT and its renin-cleaved product, des(Ang I)AGT, are also angiogenesis inhibitors, both in vitro and in vivo at concentrations within the range of those observed in plasma. The Angiotensinogen products, that is angiotensin II and possibly angiotensin II-related products, have been found to act locally in modulating adipose tissue growth in an autocrine/paracrine manner. The transient or chronic overexpression of angiotensinogen in adipose tissue favors lipogenesis in adipocytes and leads to a 'vicious' circle whereby adipose tissue development is further increased.

---

## For Research Use Only

A Reliable Research Partner in Life Science and Medicine

Toll-free: 1-888-852-8623

Web: [www.elabscience.com](http://www.elabscience.com)

Tel: 1-832-243-6086

Email: [techsupport@elabscience.com](mailto:techsupport@elabscience.com)

Fax: 1-832-243-6017