

Recombinant Human SDF2 Protein (His Tag)

Catalog Number:PKSH031339



Note: Centrifuge before opening to ensure complete recovery of vial contents.

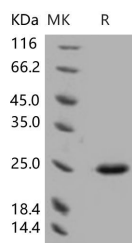
Description

Synonyms	SDF2
Species	Human
Expression Host	Baculovirus-Insect Cells
Sequence	Met 1-Leu 211
Accession	NP_008854.2
Calculated Molecular Weight	22.7 kDa
Observed molecular weight	22.7 kDa
Tag	C-His

Properties

Purity	> 95 % as determined by reducing SDS-PAGE.
Endotoxin	< 1.0 EU per µg of the protein as determined by the LAL method.
Storage	Generally, lyophilized proteins are stable for up to 12 months when stored at -20 to -80°C. Reconstituted protein solution can be stored at 4-8°C for 2-7 days. Aliquots of reconstituted samples are stable at < -20°C for 3 months.
Shipping	This product is provided as lyophilized powder which is shipped with ice packs.
Formulation	Lyophilized from sterile 50mM Tris, 100mM NaCl, pH 8.0, 0.5mM PMSF, 0.5mM EDTA, 0.5mM TCEP, 10% glycerol Normally 5 % - 8 % trehalose, mannitol and 0.01 % Tween80 are added as protectants before lyophilization. Please refer to the specific buffer i
Reconstitution	Please refer to the printed manual for detailed information.

Data



> 95 % as determined by reducing SDS-PAGE.

Background

Stromal derived factors (SDFs) are a loosely defined group of molecules that are generated by stromal cells. Two of the stromal derived factors, SDF-1 and SDF-4 belong to the chemokine family. Other SDFs, such as SDF-2 and SDF-5 are not well defined and their biological functions are less known. SDF-2 is first isolated from themousestromal cell lineST2 as a secretory protein. The amino acid sequence deduced from themurineclone and thehumanhomologare conserved more than 92 %, and the aa sequence of SDF-2 shows similarity to those of yeastdolichyl phosphate-D-mannose, protein mannosyltransferases. SDF-1 and its receptor are strongly indicated in the progression of various cancers including breast cancer. SDF-2, SDF2-L1, SDF-4, and SDF-5 are ubiquitously expressed in various cancer cell lines and SDF-2, SDF-4

For Research Use Only

A Reliable Research Partner in Life Science and Medicine

Toll-free: 1-888-852-8623

Web: www.elabscience.com

Tel: 1-832-243-6086

Email: techsupport@elabscience.com

Fax: 1-832-243-6017

Recombinant Human SDF2 Protein (His Tag)

Catalog Number:PKSH031339



and SDF-5 are expressed in mammary tissues. These SDFs have prognostic value and warrant further investigation in their biological functions and clinical value.

For Research Use Only

A Reliable Research Partner in Life Science and Medicine

Toll-free: 1-888-852-8623

Tel: 1-832-243-6086

Fax: 1-832-243-6017

Web: www.elabscience.com

Email: techsupport@elabscience.com