

Recombinant Human IL10RB/IL10R2 Protein (His & Fc Tag)



Catalog Number:PKSH031342

Note: Centrifuge before opening to ensure complete recovery of vial contents.

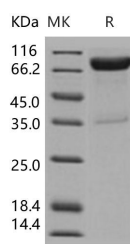
Description

Synonyms	CDW210B;CRF2-4;CRFB4;D21S58;D21S66;IL-10R2;Interleukin-10 receptor subunit beta(IL10RB);Cytokine receptor class-II member 4;Cytokine receptor family 2 member 4;Interleukin-10 receptor subunit 2
Species	Human
Expression Host	HEK293 Cells
Sequence	Met 1-Ser 220
Accession	NP_000619.3
Calculated Molecular Weight	51.7 kDa
Observed molecular weight	75-85 kDa
Tag	C-His-Fc
Bioactivity	Immobilized human IL28B at 20 µg/ml (100 µl/well) can bind human IL10RB-Fc with a linear ranger of 3. 125-25 µg/ml.

Properties

Purity	> 92 % as determined by reducing SDS-PAGE.
Endotoxin	< 1.0 EU per µg of the protein as determined by the LAL method.
Storage	Generally, lyophilized proteins are stable for up to 12 months when stored at -20 to -80°C. Reconstituted protein solution can be stored at 4-8°C for 2-7 days. Aliquots of reconstituted samples are stable at < -20°C for 3 months.
Shipping	This product is provided as lyophilized powder which is shipped with ice packs.
Formulation	Lyophilized from sterile PBS, pH 7.4 Normally 5 % - 8 % trehalose, mannitol and 0.01% Tween80 are added as protectants before lyophilization. Please refer to the specific buffer information in the printed manual.
Reconstitution	Please refer to the printed manual for detailed information.

Data



> 92 % as determined by reducing SDS-PAGE.

Background

Interleukin 10 receptor, beta subunit (IL10RB/IL-10RB) also known as Cytokine receptor family 2 member 4, Interleukin-10 receptor subunit 2, and cytokine receptor family II, member 4, is a subunit for the interleukin-10 receptor. IL10RB/IL-10RB belongs to the cytokine receptor family. It is an accessory chain essential for the active interleukin 10 receptor complex. Coexpression of this and IL10RA proteins has been shown to be required for IL10-induced signal

For Research Use Only

A Reliable Research Partner in Life Science and Medicine

Toll-free: 1-888-852-8623

Web: www.elabscience.com

Tel: 1-832-243-6086

Email: techsupport@elabscience.com

Fax: 1-832-243-6017

Recombinant Human IL10RB/IL10R2 Protein (His & Fc Tag)



Catalog Number:PKSH031342

transduction. Defects in IL10RB/IL-10RB are the cause of inflammatory bowel disease type 25 (IBD25). It is a chronic, relapsing inflammation of the gastrointestinal tract with a complex etiology. It is subdivided into Crohn disease and ulcerative colitis phenotypes. Crohn disease may affect any part of the gastrointestinal tract from the mouth to the anus, but most frequently it involves the terminal ileum and colon. Bowel inflammation is transmural and discontinuous; it may contain granulomas or be associated with intestinal or perianal fistulas. In contrast, in ulcerative colitis, the inflammation is continuous and limited to rectal and colonic mucosal layers; fistulas and granulomas are not observed. Both diseases include extraintestinal inflammation of the skin, eyes, or joints.

For Research Use Only

A Reliable Research Partner in Life Science and Medicine

Toll-free: 1-888-852-8623

Web: www.elabscience.com

Tel: 1-832-243-6086

Email: techsupport@elabscience.com

Fax: 1-832-243-6017