

Recombinant Human S100A6 Protein (Baculovirus, His Tag)

Catalog No. PKSH031347

Note: Centrifuge before opening to ensure complete recovery of vial contents.

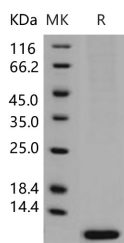
Description

Synonyms	S100A6;Protein S100-A6;Calcyclin;Growth factor-inducible protein 2A9;MLN 4;Prolactin receptor-associated protein;PRA;S100 calcium-binding protein A6;CACY;2A9;5B10;CABP;PRA
Species	Human
Expression Host	Baculovirus-Insect Cells
Sequence	Met 1-Gly 90
Accession	NP_055439.1
Calculated Molecular Weight	12 kDa
Observed molecular weight	12 kDa
Tag	C-His
Bioactivity	Not validated for activity

Properties

Purity	> 96 % as determined by reducing SDS-PAGE.
Endotoxin	< 1.0 EU per µg of the protein as determined by the LAL method.
Storage	Generally, lyophilized proteins are stable for up to 12 months when stored at -20 to -80°C. Reconstituted protein solution can be stored at 4-8°C for 2-7 days. Aliquots of reconstituted samples are stable at < -20°C for 3 months.
Shipping	This product is provided as lyophilized powder which is shipped with ice packs.
Formulation	Lyophilized from sterile 50mM Tris, 100mM NaCl, 0.5mM PMSF, 1mM TCEP, pH 8.0 Normally 5% - 8% trehalose, mannitol and 0.01% Tween 80 are added as protectants before lyophilization. Please refer to the specific buffer information in the printed manual.
Reconstitution	Please refer to the printed manual for detailed information.

Data



> 96 % as determined by reducing SDS-PAGE.

For Research Use Only

Background

S100 protein is a family of low molecular weight protein found in vertebrates characterized by two EF-hand calcium-binding motifs. There are at least 21 different S100 proteins; and the name is derived from the fact that the protein is 100% soluble in ammonium sulfate at neutral pH. Most S100 proteins are disulfide-linked homodimers; and are normally present in cells derived from the neural crest; chondrocytes; macrophages; dendritic cells; etc. S100 proteins have been implicated in a variety of intracellular and extracellular functions. They are involved in regulation of protein phosphorylation; transcription factors; the dynamics of cytoskeleton constituents; enzyme activities; cell growth and differentiation; and the inflammatory response. S100A6 (S100 calcium binding protein A6) is a member of the S100 family of proteins; and functions in prolactin secretion; and exocytosis. Chromosomal rearrangements and altered expression of S100A6 have been implicated in melanoma.