

Recombinant Human FSTL1 Protein (His Tag)

Catalog Number:PKSH031354



Note: Centrifuge before opening to ensure complete recovery of vial contents.

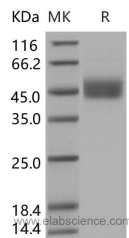
Description

Synonyms	FRP;FSL1;MIR198
Species	Human
Expression Host	HEK293 Cells
Sequence	Met 1-Ile 308
Accession	NP_009016.1
Calculated Molecular Weight	34.2 kDa
Observed molecular weight	47 kDa
Tag	C-His

Properties

Purity	> 98 % as determined by reducing SDS-PAGE.
Endotoxin	< 1.0 EU per µg as determined by the LAL method.
Storage	Lyophilized proteins are stable for up to 12 months when stored at -20 to -80°C. Reconstituted protein solution can be stored at 4-8°C for 2-7 days. Aliquots of reconstituted samples are stable at < -20°C for 3 months.
Shipping	This product is provided as lyophilized powder which is shipped with ice packs.
Formulation	Lyophilized from sterile PBS, pH 7.4
Reconstitution	Please refer to the printed manual for detailed information.

Data



Background

Follistatin-related protein 1 (FSTL1) is an extracellular glycoprotein whose functional significance in physiological and pathological processes is incompletely understood. Recently, we have shown that FSTL1 acts as a muscle-derived secreted factor that is up-regulated by Akt activation and ischemic stress and that FSTL1 exerts favorable actions on the heart and vasculature. Here, we sought to identify the receptor that mediates the cellular actions of FSTL1. It contains an FS module, a follistatin-like sequence containing 10 conserved cysteine residues. FSTL1 is thought to be an autoantigen associated with rheumatoid arthritis. DIP2A functions as a novel receptor that mediates the cardiovascular protective effects of FSTL1. Experiment results have provided in vivo and in vitro evidence to demonstrate that Fstl1 modulates lung development and alveolar maturation, in part, through BMP4 signaling.

For Research Use Only

A Reliable Research Partner in Life Science and Medicine

Toll-free: 1-888-852-8623

Web: www.elabscience.com

Tel: 1-832-243-6086

Email: techsupport@elabscience.com

Fax: 1-832-243-6017