

Recombinant Human Histone H4/HIST2H4A Protein

Catalog Number:PKSH031359



Note: Centrifuge before opening to ensure complete recovery of vial contents.

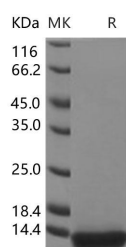
Description

Synonyms	FO108;H4;H4/A;H4/B;H4/C;H4/D;H4/E;H4/G;H4/H;H4/J;H4/K;H4/M;H4/N;H4F2;H4FA;H4FB;H4FC;H4FD;H4FE;H4FG;H4FH;H4FI;H4FJ;H4FK;H4FM;H4FN;HIST1H4A;HIST1H4B H4/I;HIST1H4C;HIST1H4D;HIST1H4E;HIST1H4F;HIST1H4H;HIST1H4I;HIST1H4J;HIST1H4K;HIST1H4L;HIST2H4;HIST2H4A
Species	Human
Expression Host	E.coli
Sequence	Met 1-Gly103
Accession	NP_003539.1
Calculated Molecular Weight	11.4 kDa
Observed molecular weight	12 kDa
Tag	None

Properties

Purity	> 95 % as determined by reducing SDS-PAGE.
Endotoxin	Please contact us for more information.
Storage	Generally, lyophilized proteins are stable for up to 12 months when stored at -20 to -80°C. Reconstituted protein solution can be stored at 4-8°C for 2-7 days. Aliquots of reconstituted samples are stable at < -20°C for 3 months.
Shipping	This product is provided as lyophilized powder which is shipped with ice packs.
Formulation	Lyophilized from sterile 2 mM β -ME in dd H ₂ O, pH 6.0 Normally 5 % - 8 % trehalose, mannitol and 0.01% Tween80 are added as protectants before lyophilization. Please refer to the specific buffer information in the printed manual.
Reconstitution	Please refer to the printed manual for detailed information.

Data



> 95 % as determined by reducing SDS-PAGE.

Background

Cyclin E1 is a member of the highly conserved cyclin family and belongs to the E-type cyclin that functions as a regulator of S phase entry and progression in mammalian cells. Cyclin E1 serves as regulatory subunits that bind, activate, and provide substrate for its associated cyclin-dependent kinase2 (CDK2), whose activity is essential for cell cycle G1 / S transition. Over expression of this encoding gene has been found in many tumors, which results in chromosome instability and by extension, induce tumorigenesis. This protein was also found to associate with, and be involved in, the

For Research Use Only

A Reliable Research Partner in Life Science and Medicine

Toll-free: 1-888-852-8623

Web: www.elabscience.com

Tel: 1-832-243-6086

Email: techsupport@elabscience.com

Fax: 1-832-243-6017

Recombinant Human Histone H4/HIST2H4A Protein

Catalog Number:PKSH031359



phosphorylation of NPAT protein (nuclear protein mapped to the ATM locus), which participates in cell-cycle regulated histone gene expression and plays a critical role in promoting cell-cycle progression in the absence of pRB. In general, cyclin E1, as an activator of phospho-CDK2 (pCDK2), is important for cell cycle progression and is frequently overexpressed in cancer cells.

For Research Use Only

A Reliable Research Partner in Life Science and Medicine

Toll-free: 1-888-852-8623

Tel: 1-832-243-6086

Fax: 1-832-243-6017

Web: www.elabscience.com

Email: techsupport@elabscience.com