

Recombinant Human IL17RA Protein (His & Fc Tag)(Active)

Catalog No. PKSH031369

Note: Centrifuge before opening to ensure complete recovery of vial contents.

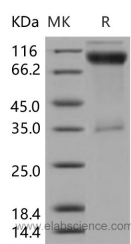
Description

Synonyms	CANDF5;CD217;CDw217;hIL-17R;IL-17RA;IL17R
Species	Human
Expression Host	HEK293 Cells
Sequence	Met 1-Trp 320
Accession	NP_055154.3
Calculated Molecular Weight	61.5 kDa
Observed molecular weight	95-105 kDa
Tag	C-His & Fc
Bioactivity	1. Measured by its ability to bind human IL17F in a functional ELISA.2. Measured by its binding ability in a functional ELISA.3. Immobilized recombinant human IL17A at 20 µg/ml (100 µl/well) can bind human IL17RA with a linear range of 32-160 ng/ml.

Properties

Purity	> 85 % as determined by reducing SDS-PAGE.
Storage	Lyophilized proteins are stable for up to 12 months when stored at -20 to -80°C. Reconstituted protein solution can be stored at 4-8°C for 2-7 days. Aliquots of reconstituted samples are stable at < -20°C for 3 months.
Shipping	This product is provided as lyophilized powder which is shipped with ice packs.
Formulation	Lyophilized from sterile PBS, pH 7.4
Reconstitution	Please refer to the printed manual for detailed information.

Data



Background

Interleukin-17 receptor (IL-17R), also known as Interleukin-17 receptor A (IL-17RA) and CD217 antigen (CD217), is a cytokine receptor which binds interleukin 17. IL-17R/IL-17RA (CD217) is a proinflammatory cytokine secreted by activated T-lymphocytes. It is a potent inducer of the maturation of CD34-positive hematopoietic precursors into

For Research Use Only

neutrophils. IL-17R/IL-17RA (CD217) is a ubiquitous type I membrane glycoprotein that binds with low affinity to interleukin 17A. Interleukin 17A and its receptor IL-17RA play a pathogenic role in many inflammatory and autoimmune diseases such as rheumatoid arthritis. Like other cytokine receptors, this receptor likely has a multimeric structure. Defects in IL-17R/IL-17RA (CD217) are the cause of familial candidiasis type 5 (CANDF5). CANDF5 is a rare disorder with altered immune responses and impaired clearance of fungal infections, selective against *Candida*. It is characterized by persistent and/or recurrent infections of the skin, nails and mucous membranes caused by organisms of the genus *Candida*, mainly *Candida albicans*.