

Recombinant Human GLIPR1 Protein (His Tag)

Catalog Number:PKSH031377



Note: Centrifuge before opening to ensure complete recovery of vial contents.

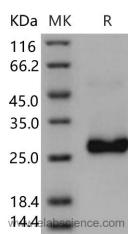
Description

Synonyms	Glioma Pathogenesis-Related Protein 1; GliPR 1; Protein RTVP-1; GLIPR1; GLIPR; RTVP1
Species	Human
Expression Host	HEK293 Cells
Sequence	Met 1-Arg 232
Accession	NP_006842.2
Calculated Molecular Weight	25.7 kDa
Observed molecular weight	27 kDa
Tag	C-His

Properties

Purity	> 97 % as determined by reducing SDS-PAGE.
Endotoxin	< 1.0 EU per µg of the protein as determined by the LAL method.
Storage	Lyophilized proteins are stable for up to 12 months when stored at -20 to -80°C. Reconstituted protein solution can be stored at 4-8°C for 2-7 days. Aliquots of reconstituted samples are stable at < -20°C for 3 months.
Shipping	This product is provided as lyophilized powder which is shipped with ice packs.
Formulation	Lyophilized from sterile PBS, pH 7.4
Reconstitution	Please refer to the printed manual for detailed information.

Data



Background

Glioma pathogenesis-related protein 1, also known as Protein RTVP-1, GLIPR1 and GLIPR, is a single-pass membrane protein which belongs to the CRISP family. GLIPR1 / RTVP-1 was expressed in high levels in glioblastomas, whereas its expression in low-grade astrocytomas and normal brains was very low. Transfection of glioma cells with small interfering RNAs targeting GLIPR1 / RTVP-1 decreased cell proliferation in all the cell lines examined and induced cell apoptosis in some of them. Overexpression of GLIPR1 / RTVP-1 increased astrocyte and glioma cell proliferation and the anchorage-independent growth of the cells. In addition, overexpression of GLIPR1 / RTVP-1 rendered glioma cells more resistant to the apoptotic effect of tumor necrosis factor-related apoptosis-inducing ligand and serum deprivation. GLIPR1 / RTVP-1 regulated the invasion of glioma cells was evident by their enhanced migration through Matrigel and by their increased invasion in a spheroid confrontation assay. The increased invasive potential of the GLIPR1 / RTVP-1 overexpressors was also shown by the increased activity of matrix metalloproteinase 2 in these cells. The expression of GLIPR1 / RTVP-1 is

For Research Use Only

A Reliable Research Partner in Life Science and Medicine

Toll-free: 1-888-852-8623

Web: www.elabscience.com

Tel: 1-832-243-6086

Email: techsupport@elabscience.com

Fax: 1-832-243-6017

Recombinant Human GLIPR1 Protein (His Tag)

Catalog Number:PKSH031377



correlated with the degree of malignancy of astrocytic tumors and that GLIPR1 / RTVP-1 is involved in the regulation of the growth, survival, and invasion of glioma cells. GLIPR1 / RTVP-1 is a potential therapeutic target in gliomas.

For Research Use Only

A Reliable Research Partner in Life Science and Medicine

Toll-free: 1-888-852-8623

Web: www.elabscience.com

Tel: 1-832-243-6086

Email: techsupport@elabscience.com

Fax: 1-832-243-6017