

Recombinant Human Complement C5a Protein

Catalog Number:PKSH031511



Note: Centrifuge before opening to ensure complete recovery of vial contents.

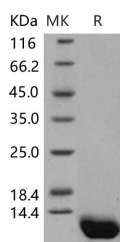
Description

Synonyms	Complement C5;C5a anaphylatoxin;C5a;CPAMD4;ECLZB;C5Da
Species	Human
Expression Host	E.coli
Sequence	Leu 679-Arg 751
Accession	NP_001726.2
Calculated Molecular Weight	8.3 kDa
Observed molecular weight	8.3 kDa
Tag	None
Bioactivity	Measured by its ability to induce N-acetyl- β -D-glucosaminidase release from differentiated U937 human histiocytic lymphoma cells. The ED50 for this effect is typically 5-15 ng/ml.

Properties

Purity	> 94 % as determined by reducing SDS-PAGE.
Endotoxin	Please contact us for more information.
Storage	Generally, lyophilized proteins are stable for up to 12 months when stored at -20 to -80°C. Reconstituted protein solution can be stored at 4-8°C for 2-7 days. Aliquots of reconstituted samples are stable at < -20°C for 3 months.
Shipping	This product is provided as lyophilized powder which is shipped with ice packs.
Formulation	Lyophilized from sterile PBS, pH 7.4 Normally 5 % - 8 % trehalose, mannitol and 0.01 % Tween80 are added as protectants before lyophilization. Please refer to the specific buffer information in the printed manual.
Reconstitution	Please refer to the printed manual for detailed information.

Data



> 94 % as determined by reducing SDS-PAGE.

Background

C5a is a protein fragment released from complement component C5. C5a is an extremely potent proinflammatory mediator, as well as a potent chemotactic factor for neutrophils and other leukocytes. It causes histamine release, increases in vascular permeability, induces several cytokines production from leukocytes, enhances neutrophil-endothelial cell adhesion, and augments the humoral and cell-mediated immune response. C5a is quickly metabolised by carboxypeptidases, forming the less potent C5adesArg. Acting via a classical G protein-coupled receptor, CD88, C5a and

For Research Use Only

A Reliable Research Partner in Life Science and Medicine

Toll-free: 1-888-852-8623

Web: www.elabscience.com

Tel: 1-832-243-6086

Email: techsupport@elabscience.com

Fax: 1-832-243-6017

Recombinant Human Complement C5a Protein

Catalog Number:PKSH031511



C5adesArg exert a number of effects essential to the innate immune response, while their actions at the more recently discovered non-G protein-coupled receptor, C5L2 (or GPR77), remain unclear. The widespread expression of C5a receptors throughout the body allows C5a to elicit a broad range of effects. Thus, C5a has been found to be a significant pathogenic driver in a number of immuno-inflammatory diseases, making C5a inhibition an attractive therapeutic strategy. C5a is a strong chemoattractant and is involved in the recruitment of inflammatory cells such as neutrophils, eosinophils, monocytes, and T lymphocytes, in activation of phagocytic cells and release of granule-based enzymes and generation of oxidants, all of which may contribute to innate immune functions or tissue damage. Accordingly, the anaphylatoxin C5a is implicated in a variety of diseases such as rheumatoid arthritis, systemic lupus erythematosus, reperfusion injury, Alzheimer's disease, and sepsis.

For Research Use Only

A Reliable Research Partner in Life Science and Medicine

Toll-free: 1-888-852-8623

Web: www.elabscience.com

Tel: 1-832-243-6086

Email: techsupport@elabscience.com

Fax: 1-832-243-6017