

# Recombinant Human Cyclophilin A Protein (His Tag)

Catalog Number:PKSH031608



**Note:** Centrifuge before opening to ensure complete recovery of vial contents.

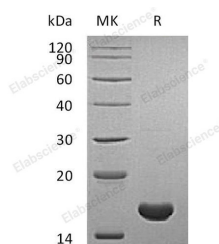
## Description

<b>Synonyms</b>	Peptidyl-prolyl cis-trans isomerase A;PPIase A;Cyclophilin A;Cyclosporin A-binding protein;Rotamase A;SP18;PPIA;CYPA
<b>Species</b>	Human
<b>Expression Host</b>	E.coli
<b>Sequence</b>	Met 1-Glu 165
<b>Accession</b>	P62937
<b>Calculated Molecular Weight</b>	19.4 kDa
<b>Observed molecular weight</b>	19 kDa
<b>Tag</b>	C-His

## Properties

<b>Purity</b>	> 97 % as determined by reducing SDS-PAGE.
<b>Endotoxin</b>	Please contact us for more information.
<b>Storage</b>	Generally, lyophilized proteins are stable for up to 12 months when stored at -20 to -80°C. Reconstituted protein solution can be stored at 4-8°C for 2-7 days. Aliquots of reconstituted samples are stable at < -20°C for 3 months.
<b>Shipping</b>	This product is provided as lyophilized powder which is shipped with ice packs.
<b>Formulation</b>	Lyophilized from sterile 50mM Tris, 150mM NaCl, 20% glycerol, pH 7.7 Normally 5 % - 8 % trehalose, mannitol and 0.01% Tween80 are added as protectants before lyophilization. Please refer to the specific buffer information in the printed manual.
<b>Reconstitution</b>	Please refer to the printed manual for detailed information.

## Data



> 97 % as determined by reducing SDS-PAGE.

## Background

Peptidyl-prolyl cis-trans isomerase A; also known as PPIase A; Rotamase A; Cyclophilin A; Cyclosporin A-binding protein; PPIA and CYPA; is a cytoplasm protein which belongs to the cyclophilin-type PPIase family and PPIase A subfamily. Cyclophilins (CyPs) are a family of proteins found in organisms ranging from prokaryotes to humans. These molecules exhibit peptidyl-prolyl isomerase activity; suggesting that they influence the conformation of proteins in cells. PPIA / Cyclophilin A accelerate the folding of proteins. It catalyzes the cis-trans isomerization of proline imidic peptide bonds in oligopeptides. PPIA / Cyclophilin A is secreted by vascular smooth muscle cells in response to inflammatory stimuli; and could thus contribute to atherosclerosis. PPIA / Cyclophilin A is not essential for mammalian cell viability.

## For Research Use Only

A Reliable Research Partner in Life Science and Medicine

Toll-free: 1-888-852-8623

Web: [www.elabscience.com](http://www.elabscience.com)

Tel: 1-832-243-6086

Email: [techsupport@elabscience.com](mailto:techsupport@elabscience.com)

Fax: 1-832-243-6017

# Recombinant Human Cyclophilin A Protein (His Tag)

Catalog Number:PKSH031608



can interact with several HIV proteins; including p55 gag; Vpr; and capsid protein; and has been shown to be necessary for the formation of infectious HIV virions.

---

## For Research Use Only

A Reliable Research Partner in Life Science and Medicine

Toll-free: 1-888-852-8623

Tel: 1-832-243-6086

Fax: 1-832-243-6017

Web: [www.elabscience.com](http://www.elabscience.com)

Email: [techsupport@elabscience.com](mailto:techsupport@elabscience.com)