

Recombinant Human Latexin/LXN Protein (His Tag)

Catalog Number:PKSH031755



Note: Centrifuge before opening to ensure complete recovery of vial contents.

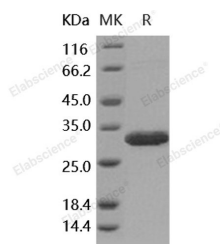
Description

Synonyms	ECI;TCI
Species	Human
Expression Host	E.coli
Sequence	Glu 2-Glu222
Accession	NP_064554.3
Calculated Molecular Weight	26.8 kDa
Observed molecular weight	26.8 kDa
Tag	N-His

Properties

Purity	> 97 % as determined by reducing SDS-PAGE.
Endotoxin	Please contact us for more information.
Storage	Generally, lyophilized proteins are stable for up to 12 months when stored at -20 to -80°C. Reconstituted protein solution can be stored at 4-8°C for 2-7 days. Aliquots of reconstituted samples are stable at < -20°C for 3 months.
Shipping	This product is provided as lyophilized powder which is shipped with ice packs.
Formulation	Lyophilized from sterile 20mM HEPES, 0.1M KCl, pH 7.5 Normally 5 % - 8 % trehalose, mannitol and 0.01% Tween80 are added as protectants before lyophilization. Please refer to the specific buffer information in the printed manual.
Reconstitution	Please refer to the printed manual for detailed information.

Data



> 97 % as determined by reducing SDS-PAGE.

Background

Latexin; also known as endogenous carboxypeptidase inhibitor; tissue carboxypeptidase inhibitor; TCI; ECI and LXN; is a cytoplasm protein which belongs to the protease inhibitor I47 (latexin) family. It is highly expressed in heart; prostate; ovary; kidney; pancreas; and colon. Latexin / LXN is the only known endogenous specific inhibitor of zinc-dependent metalloproteinases (MCPs) present in mammals so far. Latexin is originally identified as a molecular marker for the regional specification of the neocortex in development in rats. The 222 amino acid latexin in human shows different expression distribution with high levels in heart; prostate; ovary; kidney; pancreas; and colon; but only moderate or low levels in other tissues including brain. Latexin is also expressed at high levels and is inducible in macrophages in concert with other protease inhibitors and potential protease targets; and thus is suggested to play a role in inflammation

For Research Use Only

A Reliable Research Partner in Life Science and Medicine

Toll-free: 1-888-852-8623

Web: www.elabscience.com

Tel: 1-832-243-6086

Email: techsupport@elabscience.com

Fax: 1-832-243-6017

Recombinant Human Latexin/LXN Protein (His Tag)

Catalog Number:PKSH031755



and innate immunity pathways. Despite of the non-detectable sequence similarity with plant and parasite inhibitors; Latexin is related to a human putative tumor suppressor protein; TIG1. In addition; Latexin is also implicated in Alzheimer's disease.

For Research Use Only

A Reliable Research Partner in Life Science and Medicine

Toll-free: 1-888-852-8623

Tel: 1-832-243-6086

Fax: 1-832-243-6017

Web: www.elabscience.com

Email: techsupport@elabscience.com