

Recombinant Human Latexin/LXN Protein (Fc Tag)

Catalog Number:PKSH031756



Note: Centrifuge before opening to ensure complete recovery of vial contents.

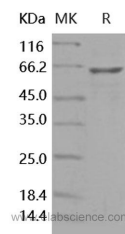
Description

Synonyms	ECI;TCI
Species	Human
Expression Host	HEK293 Cells
Sequence	Glu2-Glu222
Accession	NP_064554.3
Calculated Molecular Weight	52 kDa
Observed molecular weight	60-65 kDa
Tag	N-Fc

Properties

Purity	> 90 % as determined by reducing SDS-PAGE.
Endotoxin	< 1.0 EU per µg as determined by the LAL method.
Storage	Generally, lyophilized proteins are stable for up to 12 months when stored at -20 to -80°C. Reconstituted protein solution can be stored at 4-8°C for 2-7 days. Aliquots of reconstituted samples are stable at < -20°C for 3 months.
Shipping	This product is provided as lyophilized powder which is shipped with ice packs.
Formulation	Lyophilized from sterile 100mM Glycine, 10mM NaCl, 50mM Tris, pH 7.5
Reconstitution	Please refer to the printed manual for detailed information.

Data



Background

Latexin, also known as endogenous carboxypeptidase inhibitor, tissue carboxypeptidase inhibitor, TCI, ECI and LXN, is a cytoplasm protein which belongs to the protease inhibitor I47 (latexin) family. It is highly expressed in heart, prostate, ovary, kidney, pancreas, and colon. Latexin / LXN is the only known endogenous specific inhibitor of zinc-dependent metalloproteinases (MCPs) present in mammals so far. Latexin is originally identified as a molecular marker for the regional specification of the neocortex in development in rats. The 222 amino acid latexin in human shows different expression distribution with high levels in heart, prostate, ovary, kidney, pancreas, and colon, but only moderate or low levels in other tissues including brain. Latexin is also expressed at high levels and is inducible in macrophages in concert with other protease inhibitors and potential protease targets, and thus is suggested to play a role in inflammation and innate immunity pathways. Despite of the non-detectable sequence similarity with plant and parasite inhibitors, Latexin is related to a human putative tumor suppressor protein, TIG1. In addition, Latexin is also implicated in Alzheimer's disease.

For Research Use Only

A Reliable Research Partner in Life Science and Medicine

Toll-free: 1-888-852-8623

Web: www.elabscience.com

Tel: 1-832-243-6086

Email: techsupport@elabscience.com

Fax: 1-832-243-6017