

Recombinant Human HER3/ErbB3 Protein (His Tag)

Catalog Number:PKSH031766



Note: Centrifuge before opening to ensure complete recovery of vial contents.

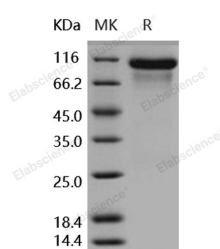
Description

Synonyms	c-erbB-3;c-erbB3;EEBB3;ErbB-3;erbB3-S;HER3;LCCS2;MDA-BF-1;p180-ErbB3;p45-sErbB3;p85-sErbB3
Species	Human
Expression Host	HEK293 Cells
Sequence	Met 1-Thr 643
Accession	NP_001973.2
Calculated Molecular Weight	70.2 kDa
Observed molecular weight	100-110 kDa
Tag	C-His
Bioactivity	Immobilized human ErbB3 at 2 µg/mL (100 µl/well) can bind human NRG1 (isoform Beta1), The EC50 of human NRG1 (isoform Beta1) is 0.43 µg/mL.

Properties

Purity	> 95 % as determined by reducing SDS-PAGE.
Endotoxin	< 1.0 EU per µg of the protein as determined by the LAL method.
Storage	Generally, lyophilized proteins are stable for up to 12 months when stored at -20 to -80°C. Reconstituted protein solution can be stored at 4-8°C for 2-7 days. Aliquots of reconstituted samples are stable at < -20°C for 3 months.
Shipping	This product is provided as lyophilized powder which is shipped with ice packs.
Formulation	Lyophilized from sterile PBS, pH 7.5 Normally 5 % - 8 % trehalose, mannitol and 0.01% Tween80 are added as protectants before lyophilization. Please refer to the specific buffer information in the printed manual.
Reconstitution	Please refer to the printed manual for detailed information.

Data



> 95 % as determined by reducing SDS-PAGE.

Background

ErbB3, also known as Her3(human epidermal growth factor receptor3), is a member of the epidermal growth factor receptor (EGFR) family of receptor tyrosine kinases. This membrane-bound glycoprotein has a neuregulin binding domain but has not an active kinase domain., and therefore can not mediate the intracellular signal transduction through protein phosphorylation. However, its heterodimer with ErbB2 or other EGFR members responsible for tyrosine phosphorylation forms a receptor complex with high affinity, and initiates the related pathway which lead to cell

For Research Use Only

A Reliable Research Partner in Life Science and Medicine

Toll-free: 1-888-852-8623

Web: www.elabscience.com

Tel: 1-832-243-6086

Email: techsupport@elabscience.com

Fax: 1-832-243-6017

Recombinant Human HER3/ErbB3 Protein (His Tag)

Catalog Number:PKSH031766



proliferation or differentiation. ErbB3 has been shown to be implicated in numerous cancers, including prostate, bladder, and breast tumors. This protein has different isoforms derived from alternative splicing variants, and among which, the secreted isoform lacking the intermembrane region modulates the activity of membrane-bound form.

For Research Use Only

A Reliable Research Partner in Life Science and Medicine

Toll-free: 1-888-852-8623

Tel: 1-832-243-6086

Fax: 1-832-243-6017

Web: www.elabscience.com

Email: techsupport@elabscience.com