

Recombinant Human CD147/Basigin Protein (Fc Tag)

Catalog No. PKSH031785

Note: Centrifuge before opening to ensure complete recovery of vial contents.

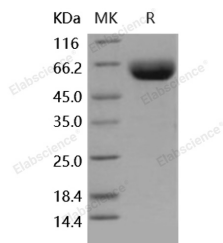
Description

Synonyms	Basigin;5F7;Collagenase Stimulatory Factor;Extracellular Matrix Metalloproteinase Inducer;EMMPRIN;Leukocyte Activation Antigen M6;OK Blood Group Antigen;Tumor Cell-Derived Collagenase Stimulatory Factor;TCSF;CD147;BSG
Species	Human
Expression Host	HEK293 Cells
Sequence	Met 1-His 205
Accession	NP_940991.1
Calculated Molecular Weight	46.8 kDa
Observed molecular weight	58-65 kDa
Tag	C-hFc
Bioactivity	Not validated for activity

Properties

Purity	> 97 % as determined by reducing SDS-PAGE.
Endotoxin	< 1.0 EU per µg of the protein as determined by the LAL method.
Storage	Generally, lyophilized proteins are stable for up to 12 months when stored at -20 to -80°C. Reconstituted protein solution can be stored at 4-8°C for 2-7 days. Aliquots of reconstituted samples are stable at < -20°C for 3 months.
Shipping	This product is provided as lyophilized powder which is shipped with ice packs.
Formulation	Lyophilized from sterile PBS, pH 7.4 Normally 5 % - 8 % trehalose, mannitol and 0.01% Tween80 are added as protectants before lyophilization. Please refer to the specific buffer information in the printed manual.
Reconstitution	Please refer to the printed manual for detailed information.

Data



> 97 % as determined by reducing SDS-PAGE.

Background

For Research Use Only

CD147/EMMPRIN (Extracellular Matrix Metalloproteinase Inducer); also known as Basigin (BSG); is a transmembrane glycoprotein with different forms resulted from different modes of glycosylation and N-terminal sequence variants. It is a member of the immunoglobulin superfamily with homology to both the immunoglobulin V domain and MHC class II antigen beta-chain. This protein play important roles in variety of events including spermatogenesis; embryo implantation; neural network formation. CD147 induces the production and release of matrix metalloproteinases (MMP) in the surrounding mesenchymal cells and tumor cells; and thereby promotes invasion; metastasis; growth and survival of malignant cells. Furthermore; CD147 also serves as a receptor for extracellular cyclophilinthe and its association with integrins might be important in signal transduction. Recently; CD147 displays increased expression in many cancers; and it has been previously demonstrated to participate in cancer metastasis and progression. Thus; CD147 and its antibody are used as an effective treatment for malignant cancers.