

# Recombinant Human CCL22/MDC Protein (His Tag)

Catalog Number:PKSH031817



**Note:** Centrifuge before opening to ensure complete recovery of vial contents.

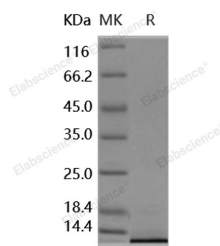
## Description

<b>Synonyms</b>	A-152E5.1;ABCD-1;DC/B-CK;MDC;SCYA22;STCP-1
<b>Species</b>	Human
<b>Expression Host</b>	E.coli
<b>Sequence</b>	Gly 25-Gln 93
<b>Accession</b>	O00626
<b>Calculated Molecular Weight</b>	9.7 kDa
<b>Observed molecular weight</b>	10 kDa
<b>Tag</b>	N-His

## Properties

<b>Purity</b>	> 90 % as determined by reducing SDS-PAGE.
<b>Endotoxin</b>	Please contact us for more information.
<b>Storage</b>	Generally, lyophilized proteins are stable for up to 12 months when stored at -20 to -80°C. Reconstituted protein solution can be stored at 4-8°C for 2-7 days. Aliquots of reconstituted samples are stable at < -20°C for 3 months.
<b>Shipping</b>	This product is provided as lyophilized powder which is shipped with ice packs.
<b>Formulation</b>	Lyophilized from sterile 30% Acetonitrile, 0.1% TFA Normally 5 % - 8 % trehalose, mannitol and 0.01% Tween80 are added as protectants before lyophilization. Please refer to the specific buffer information in the printed manual.
<b>Reconstitution</b>	Please refer to the printed manual for detailed information.

## Data



> 90 % as determined by reducing SDS-PAGE.

## Background

Chemokine (C-C motif) ligand 22(ABCD-1 / CCL22) is a kind of CC chemokine which is a family of secreted proteins involved in immunoregulatory and inflammatory processes. The cytokine displays chemotactic activity for monocytes, dendritic cells, natural killer cells and for chronically activated T lymphocytes. It also displays a mild activity for primary activated T lymphocytes and has no chemoattractant activity for neutrophils, eosinophils and resting T lymphocytes. This ABCD-1 / CCL22 chemokine binds to chemokine receptor CCR4. This chemokine may play a role in the trafficking of activated / effector T lymphocytes to inflammatory sites and other aspects of activated T-lymphocyte physiology. ABCD-1 / CCL22 is highly expressed in macrophage and in monocyte-derived dendritic cells, and thymus, and in Langerhans' cell histiocytosis and atopic dermatitis but not in dermatopathic lymphadenopathy. This chemokine is also

## For Research Use Only

A Reliable Research Partner in Life Science and Medicine

Toll-free: 1-888-852-8623

Web: [www.elabscience.com](http://www.elabscience.com)

Tel: 1-832-243-6086

Email: [techsupport@elabscience.com](mailto:techsupport@elabscience.com)

Fax: 1-832-243-6017

# Recombinant Human CCL22/MDC Protein (His Tag)

Catalog Number:PKSH031817



found in lymph node, appendix, activated monocytes, resting and activated macrophages. This protein is lower expressed in lung and spleen and very weakly expressed in small intestine.

---

## For Research Use Only

A Reliable Research Partner in Life Science and Medicine

Toll-free: 1-888-852-8623

Web: [www.elabscience.com](http://www.elabscience.com)

Tel: 1-832-243-6086

Email: [techsupport@elabscience.com](mailto:techsupport@elabscience.com)

Fax: 1-832-243-6017