

Recombinant Human CHL-1 Protein (His Tag)

Catalog Number:PKSH031836



Note: Centrifuge before opening to ensure complete recovery of vial contents.

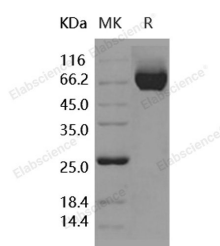
Description

Synonyms	CALL;L1CAM2;LICAM2
Species	Human
Expression Host	HEK293 Cells
Sequence	Met 1-Gln 1080
Accession	AAI04919.1
Calculated Molecular Weight	120 kDa
Observed molecular weight	160-180 kDa
Tag	C-His
Bioactivity	Measured by the ability of the immobilized protein to support the adhesion of C6 Rat brain glial cells. When 5×10^4 cells/well are added to CHL1 coated plates (0.8 $\mu\text{g/ml}$ and 100 $\mu\text{l/well}$), approximately 40%-60% will adhere specifically after 60 minutes at 37°C.

Properties

Purity	> 95 % as determined by reducing SDS-PAGE.
Endotoxin	< 1.0 EU per μg of the protein as determined by the LAL method.
Storage	Generally, lyophilized proteins are stable for up to 12 months when stored at -20 to -80°C. Reconstituted protein solution can be stored at 4-8°C for 2-7 days. Aliquots of reconstituted samples are stable at < -20°C for 3 months.
Shipping	This product is provided as lyophilized powder which is shipped with ice packs.
Formulation	Lyophilized from sterile PBS, pH 7.4 Normally 5 % - 8 % trehalose, mannitol and 0.01 % Tween80 are added as protectants before lyophilization. Please refer to the specific buffer information in the printed manual.
Reconstitution	Please refer to the printed manual for detailed information.

Data



> 95 % as determined by reducing SDS-PAGE.

Background

Neural cell adhesion molecule L1-like protein, also known as close homolog of L1 (CHL1) is the prototypic member of the CTF / NF-1 family of transcription factors that serve as a novel calcium signaling pathway-responsive transcription factor and is considered as a member of the largest ctf complementation group, consisting of 30 of 126 ctf mutants isolated. CHL1 is a cell adhesion molecule highly related to L1. It contains structure plan of six extracellular C2-type

For Research Use Only

A Reliable Research Partner in Life Science and Medicine

Toll-free: 1-888-852-8623

Web: www.elabscience.com

Tel: 1-832-243-6086

Email: techsupport@elabscience.com

Fax: 1-832-243-6017

Recombinant Human CHL-1 Protein (His Tag)

Catalog Number:PKSH031836



immunoglobulin (Ig) domains followed by five fibronectin typeIII domains linked by a single membrane-spanning region to a short cytoplasmic domain. The extracellular portion of CHL1 is higly glycosylated and involved them in hemophilic disease.

For Research Use Only

A Reliable Research Partner in Life Science and Medicine

Toll-free: 1-888-852-8623

Web: www.elabscience.com

Tel: 1-832-243-6086

Email: techsupport@elabscience.com

Fax: 1-832-243-6017