

# Recombinant Human IL1RL1/ST2 Protein (Fc Tag)

Catalog Number:PKSH031875



**Note:** Centrifuge before opening to ensure complete recovery of vial contents.

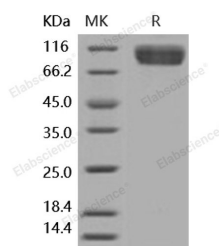
## Description

<b>Synonyms</b>	DER4;FIT-1;IL1RL1;IL33R;IL-1 R4;ST2;ST2L;ST2V;T1
<b>Species</b>	Human
<b>Expression Host</b>	HEK293 Cells
<b>Sequence</b>	Met 1-Phe 328
<b>Accession</b>	NP_003847.2
<b>Calculated Molecular Weight</b>	67.1 kDa
<b>Observed molecular weight</b>	85-95 kDa
<b>Tag</b>	C-hFc
<b>Bioactivity</b>	Immobilized human IL-33 at 10 µg/ml (100 µl/well) can bind human IL1RL1 / Fc Chimera with a linear range of 0.31-5 ng/ml.

## Properties

<b>Purity</b>	> 95 % as determined by reducing SDS-PAGE.
<b>Endotoxin</b>	< 1.0 EU per µg of the protein as determined by the LAL method.
<b>Storage</b>	Generally, lyophilized proteins are stable for up to 12 months when stored at -20 to -80°C. Reconstituted protein solution can be stored at 4-8°C for 2-7 days. Aliquots of reconstituted samples are stable at < -20°C for 3 months.
<b>Shipping</b>	This product is provided as lyophilized powder which is shipped with ice packs.
<b>Formulation</b>	Lyophilized from sterile PBS, pH 7.4 Normally 5 % - 8 % trehalose, mannitol and 0.01% Tween80 are added as protectants before lyophilization. Please refer to the specific buffer information in the printed manual.
<b>Reconstitution</b>	Please refer to the printed manual for detailed information.

## Data



> 95 % as determined by reducing SDS-PAGE.

## Background

IL-1 receptor-like 1 (IL1RL1) is a membrane receptor involved in TH2 inflammatory responses and eosinophilia. It has previously been described that levels of the interleukin-1 like 1 (IL1RL1) protein can be used to diagnose cardiovascular disease and determine the prognosis for a patient with cardiovascular disease. The ligand for IL1RL1 has been described, and named IL-33. Mutants in IL1RL1 have been associated with blood eosinophil counts in a genome-wide association study and with asthma in family-based and case-control studies. As an important mediator involved in many immune and inflammatory responses, this cytokine has been implicated as a regulator of both the development and effector phases of

## For Research Use Only

A Reliable Research Partner in Life Science and Medicine

Toll-free: 1-888-852-8623

Web: [www.elabscience.com](http://www.elabscience.com)

Tel: 1-832-243-6086

Email: [techsupport@elabscience.com](mailto:techsupport@elabscience.com)

Fax: 1-832-243-6017

# Recombinant Human IL1RL1/ST2 Protein (Fc Tag)

Catalog Number:PKSH031875



type 2 helper T cell responses, and as a negative feedback modulator of macrophage pro-inflammatory function. IL33 is a specific ligand of ST2L and induces production of Th2 cytokines.

---

## For Research Use Only

A Reliable Research Partner in Life Science and Medicine

Toll-free: 1-888-852-8623

Tel: 1-832-243-6086

Fax: 1-832-243-6017

Web: [www.elabscience.com](http://www.elabscience.com)

Email: [techsupport@elabscience.com](mailto:techsupport@elabscience.com)